

Appropriate Assessment

Natura Impact Report

of

**Part B: Appendix 3;
Development Guidelines and
Technical Standards; Section
6.5 of the Draft County
Donegal Development Plan
2018-2024**

In Line with the requirements of Article 6 (3) of the EU Habitats Directive



**Comhairle Contae
Dhún na nGall**
Donegal County Council

April 2018

CONTENTS

1. INTRODUCTION.....	3
2. APPROPRIATE ASSESSMENT	5
Habitats Directive and Appropriate Assessment	5
The Process of Appropriate Assessment	6
Stage 1 AA Screening of Part B: Appendix 3, Development Guidelines and Technical Standards, Section 6.5	8
Stage 2 Appropriate Assessment of Part B: Appendix 3, Development Guidelines and Technical Standards, Section 6.5.....	8
3. COUNTY PROFILE	10
4. Outline of Part B: App 3, Development Guidelines and Technical Standards, Section 6.5	12
5. RELEVANT NATURA 2000 SITES	15
Zone of Influence of Part B: Appendix 3, Section 6.5 of the Plan	15
Assessment of Likely Significant Affect	16
6. Appropriate Assessment of Part B: Appendix 3, Development Guidelines and Technical Standards, Section 6.5.....	17
Summary Findings of Stage 2 Assessment	17
In Combination Effects	18
Mitigation Measures.....	18
7. Conclusion of Stage 2 – Appropriate Assessment & Natura Impact Report	20
Appropriate Assessment Conclusion Statement.....	20
8. Appendix 1. Natura 2000 Sites Relevant to this Appropriate Assessment	21
County Donegal: Special Areas of Conservation (SACs)	21
County Donegal: Special Protection Areas (SPAs).....	43
Northern Ireland SACs within 15km of County Donegal	58
Northern Ireland SPAs within 15km of County Donegal	70
County Sligo SACs within 15km of County Donegal	72
County Sligo SPAs within 15km of County Donegal	79
County Leitrim SACs within 15km of County Donegal	82
County Leitrim SPAs within 15km of County Donegal	88
EC Environmental Objectives (FPM) Regulations 2009 sites within the Donegal Area	89
9. Appendix 2. Impact Assessment Screening Matrix - Natura Impact Report.....	91

LIST OF TABLES

Table 1: Stages in the process of Habitats Directive Appropriate Assessment.....8
Table 2: Environmental Designations in Donegal.....12

LIST OF MAPS

MAP 1: Natura 2000 sites within County Donegal in relation to windfarm development areas.....16

1. INTRODUCTION

Donegal County Council is preparing a new County Donegal Development Plan 2018 – 2024 (hereinafter referred to as the Draft CDP). This will replace the existing County Donegal Development Plan 2012 – 2018 (as varied). The Draft CDP is being prepared under the provisions of the Planning and Development Act 2000 (as amended) to provide for sustainable development and improvement of the environmental, social, economic and cultural assets of the county.

It is the responsibility of the competent authority, Donegal County Council, to complete an Appropriate Assessment (AA) in respect of the Draft CDP to assess the likelihood of the Plan having significant effects on the integrity of the Natura 2000 network of European sites. The Draft CDP, Environmental Report and Appropriate Assessment were published for a period of public consultation from 19th May 2017 to 1st September 2017 inclusive. During the period of public consultation of the Draft CDP, Environmental Report and Appropriate Assessment, a total of 312 no. submissions/observations were made including 20 no. by prescribed authorities, 275 no. by the general public, 8 no. by elected members and groupings of elected members and a number of cross-directorate comments.

The Chief Executive's Report, dated October 2017, summarised and responded to each of these submissions/observations. Following consideration of this report, the Elected Members at an adjourned Council meeting on 13th December 2017, proposed a number of changes to the Draft Plan including 40 proposed Material Alterations and it was necessary to make them available for public consultation, in compliance with the requirements of Section 12(7) of the Planning and Development Act 2000 (as amended).

The review of the Draft County Donegal Development Plan 2018-2024 has been subject to an Appropriate Assessment (AA) and a Strategic Environmental Assessment (SEA) throughout the development plan process. An addendum to the SEA and the AA reports was prepared in respect of the Material Alterations.

The proposed Material Alterations along with an environmental and appropriate assessment of them were published for public consultation through the following three documents:

- Proposed Material Alterations to the Draft County Donegal Development Plan 2018-2024 (including Appendix A), February 2018.
- Strategic Environmental Assessment of Proposed Material Alterations to the Draft County Donegal Development Plan 2018-2024: Addendum to Part D Environmental Report, February 2018.
- Addendum to Appropriate Assessment: Natura Impact Report of Proposed Material Alterations to the Draft County Donegal Development Plan 2018-2024 (including Appendices A-C), February 2018.

The proposed Material Alterations to the Draft CDP were made available for public consultation during the period from 9th February 2018 to 8th March, 2018 inclusive, and submissions and observations in respect of the Material Alterations were invited during this time. A total of 32 no. submissions or observations have been received, 16 no. were received from the public and 16 no. were received from Statutory Consultees.

In particular a submission from the Minister of the Department of Housing, Planning and Local Government, (our reference PB12) was received on the 8th March 2018 pertaining to 5 different issues including Part B: Appendix 3; Development Guidelines and Technical Standards, section 6.5(f) and raised the following points in relation to this section of the Draft CDP:

- The Department's previous point (made in submission to Draft CDP on 31st August) that an SEA is required for Technical Standard 6.5 (f), being as it is a mandatory

development management consideration thereby falling within the framework for development consent set out in the CDP; this has not been assessed as part of the SEA process.

- The failure to submit this technical standard to an SEA renders the amended Draft CDP inconsistent with the requirements of the Interim Planning Guidelines; Renewable Energy and Climate Change, July 2017 (section 4) and not in compliance with the SEA process in the Planning and Development Act 2000 (as amended), section 1A, and the Planning and Development Regulations 2001 (as amended by S.I.436/2004 and S.I.201/2011).
- Highlights the requirements of Article 13A to 13F of the 2001 Regulations and Schedule 2B that set out the relevant requirements.
- The inclusion of the technical standard does not adhere to the procedures laid down in the statutory obligations detailed above and it appears there is a serious breach of statutory procedure.
- Recommends the Council seek legal advice on how to remedy the points above but suggests the clearest and most effective way to remedy the procedural failure would be to remove technical standard 6.5 (f) to retain the integrity of the SEA report and thereby the CDP.

Subsequent to the specific comments made in the submission from the Department of Housing, Planning and Local Government referenced above this Natura Impact Report (NIR) has been prepared in support of an Appropriate Assessment of Section 6.5 (sub-paragraphs a-f) to fulfil the requirements of Council Directive 92/43/EEC of 21 May 1992 on the conservation of natural habitats and of wild fauna and flora, hereinafter referred to as the Habitats Directive. This report relates solely to Part B: Appendix 3, Development Guidelines and Technical Standards, Section 6.5 and must be considered in the context of both *Appropriate Assessment Natura Impact Report of the Draft County Donegal Development Plan 2018–2024* (May 2017) and NIR and *Natura Impact Report of Proposed Material Alterations to the Draft County Donegal Development Plan 2018-2024* (February 2018).

2. APPROPRIATE ASSESSMENT

Habitats Directive and Appropriate Assessment

The aim of the EU Habitats Directive (92/443/EEC) is to promote the maintenance of biodiversity, taking account of economic, social, cultural and regional requirements. The Directive recognizes that in the European territory of the Member States, natural habitats are continuing to deteriorate and an increasing number of wild species are seriously threatened. In order to ensure the restoration or maintenance of natural habitats and species of Community interest at a favourable conservation status, it is necessary for Member States to designate special areas of conservation in order to create a coherent European ecological network. Criteria for site designation are set out in the Directive. The network of sites is referred to as Natura 2000 and includes Special Areas of Conservation (SACs including candidate SACs) and Special Protection Areas (SPAs including proposed SPAs).

The Natura 2000 network of European sites is comprised of sites of highest biodiversity importance for rare and threatened habitats and species across the EU. SACs are selected for the conservation of habitats listed in Annex I of the Habitats Directive, and for species of animals (other than birds) and plants listed in Annex II. SPAs are selected for the conservation of birds listed in Annex I of the Birds Directive (Directive 2009/147/EC of the European Parliament and of the Council of 30 November 2009 on the conservation of wild birds (codified version of Council Directive 79/409/EEC as amended)) and other regularly occurring migratory birds and their habitats. The annexed habitats and species for which each site has been selected are the qualifying interests of the sites, and the conservation objectives of the site are based on these qualifying interests.

Crucially, the Habitats Directive requires that an AA must be made of any plan or programme that is likely to have a significant effect on the conservation objectives of designated sites i.e. on SACs or SPAs, before any decision can be made to allow that plan or project to proceed. Article 6(3) of the Habitats Directive states that

“Any plan or project not directly connected with or necessary to the management of the [Natura 2000] site but likely to have a significant effect thereon, either individually or in combination with other plans or projects, shall be subjected to an appropriate assessment of its implications for the site in view of the site’s conservation objectives. In light of the conclusions of the assessment of the implications for the site and subject to the provisions of paragraph 4, the competent national authorities shall agree to the plan or project only after having ascertained that it will not adversely affect the integrity of the site concerned and, if appropriate, after having obtained the opinion of the general public.”

In the event that an assessment determines that there is a likelihood of an adverse effect, Article 6(4) makes provision for a plan or project to proceed under certain restricted circumstances. Article 6(4) states that

“If, in spite of a negative assessment of the implications for the site and in the absence of alternative solutions, a plan or project must nevertheless be carried out for imperative reasons of overriding public interest, including those of a social or economic nature, Member States shall take all compensatory measures necessary to ensure that the overall coherence of the Natura 2000 is protected. It shall inform the Commission of the compensatory measures adopted.

Where the site concerned hosts a priority natural habitat type and/or a priority species the only considerations which may be raised are those relating to human health or public safety, to the beneficial consequences of

primary importance for the environment or, further to an opinion from the Commission, to other imperative reasons of overriding public interest.”

The application of AA in Ireland, as required by the Habitats Directive, is primarily governed by the European Communities (Birds and Natural Habitats) Regulations 2011 (S.I. No. 477 of 2011 as amended by S.I. No. 355 of 2015), and the Planning and Development (Amendment) Act 2010 (Part XAB), as amended by the Environment (Miscellaneous Provisions) Act 2011. A range of guidance on carrying out appropriate assessment, and interpretation of relevant legislation is available including *inter alia*

- Appropriate Assessment of Plans and Projects in Ireland - Guidance for Planning Authorities. Department of Environment, Heritage and Local Government, 2009.
- Managing Natura 2000 Sites: The Provision of Article 6 of the Habitats Directive 92/43/EEC. European Commission, 2000.
- Assessment of Plans and Projects Significantly Affecting Natura 2000 Sites: Methodological Guidance on the Provisions of Article 6 (3) and (4) of the Habitats Directive 92/43/EEC. European Commission, 2002.
- Guidance Document on Article 6 (4) of the 'Habitats Directive' 92/43/EEC. Clarification of the Concepts of Alternative Solutions, Imperative Reasons of Overriding Public Interest, Compensatory Measures, Overall Coherence. Opinion of the European Commission. European Commission, 2007 / 2012.
- Nature and biodiversity cases: Ruling of the European Court of Justice. European Commission. 2006.
- *Habitats Directive and environmental assessment of plans and projects*. García Ureta, A. Journal for European Environmental and Planning Law 2, 84-96, 2007.
- Appropriate Assessment under Article 6 of the Habitats Directive: Guidance for Planning Authorities. Circular NPW 1/10 & PSSP 2/10.
- Compliance Conditions in respect of Developments requiring (1) Environmental Impact Assessment (EIA); or (2) having potential impacts on Natura 2000 sites. Circular letter PD 2/07, NPWS 1/07
- *Compliance of Existing Land Use Plans with the EU Habitats Directive*. Department of Environment, Heritage and Local Government (2011) Circular Letter PSSP 5/2011.

This Natura Impact Report (NIR) and the Appropriate Assessment process in general has been guided by, and has taken account of the documentation outlined above.

The Process of Appropriate Assessment

While there is no prescribed method for undertaking Appropriate Assessment (AA), or form or content for reporting, methodological guidance promotes a four-stage process to complete the AA. The requirements for individual stages are summarized in Table 1. An important aspect of the AA process is that the outcome at each successive stage determines whether a further stage in the process is required. Stages 1 and 2 relate to Article 6(3) of the Habitats Directive and are concerned with the strict protection of sites; stages 3 and 4 relate to Article 6(4) which is the procedure for allowing derogation from this strict protection in certain restricted circumstances. Ultimately the plan may only be made if the AA process reaches completion and has ascertained beyond reasonable scientific doubt that it shall not adversely affect the integrity of a European site, or in the absence of alternative solutions, imperative reasons of overriding public interest (IROPI) can be established as required under Section 177W, Part XAB, Planning and Development Act 2000 as amended. In the latter scenario compensatory measures are required to offset any damage to the Natura 2000 network.

Table 1. Stages in the Process of Habitats Directive Appropriate Assessment

Stage	Task
1	<p>Screening</p> <p>Screening is the process that addresses and records the reasoning and conclusions in relation to the first two tests of Article 6(3): i) whether a plan or project is directly connected to or necessary for the management of the site, and ii) whether a plan or project, alone or in combination with other plans and projects, is likely to have significant effects on a Natura 2000 site in view of its conservation objectives. If the effects are deemed to be significant, potentially significant, or uncertain, or if the screening process becomes overly complicated, then the process must proceed to Stage 2 (AA). Screening should be undertaken without the inclusion of mitigation, unless potential impacts clearly can be avoided through the modification or redesign of the plan or project, in which case the screening process is repeated on the altered plan. The greatest level of evidence and justification will be needed in circumstances when the process ends at screening stage on grounds of no impact.</p>
2	<p>Appropriate Assessment</p> <p>This stage considers whether the plan or project, alone or in combination with other projects or plans, will have adverse effects on the integrity of a Natura 2000 site, and includes any mitigation measures necessary to avoid, reduce or offset negative effects. The proponent of the plan or project will be required to submit a Natura Impact Report/Natura Impact Statement, i.e. the report of a targeted professional scientific examination of the plan or project and the relevant Natura 2000 sites, to identify and characterize any possible implications for the site in view of the site's conservation objectives, taking account of in combination effects. This should provide information to enable the competent authority to carry out the appropriate assessment. If the assessment is negative, i.e. adverse effects on the integrity of a site cannot be excluded, then the process must proceed to Stage 4, or the plan or project should be abandoned.</p>
3	<p>Alternative Solutions</p> <p>This stage examines any alternative solutions or options that could enable the plan or project to proceed without adverse effects on the integrity of a Natura 2000 site. The process must return to Stage 2 as alternatives will require appropriate assessment in order to proceed. Demonstrating that all reasonable alternatives have been considered and assessed, and that the least damaging option has been selected, is necessary to progress to Stage 4.</p>
4	<p>Imperative Reasons of Overriding Public Interest (IROPI)/Derogation</p> <p>Stage 4 is the main derogation process of Article 6(4) which examines whether there are imperative reasons of overriding public interest (IROPI) for allowing a plan or project that will have adverse effects on the integrity of a Natura 2000 site to proceed in cases where it has been established that no less damaging alternative solution exists.</p> <p>The extra protection measures for Annex I priority habitats come into effect when making the IROPI case. Compensatory measures must be proposed and assessed. The Commission must be informed of the compensatory measures. Compensatory measures must be practical, implementable, likely to succeed, proportionate and enforceable, and they must be approved by the Minister.</p>

Stage 1 AA Screening of Part B: Appendix 3, Development Guidelines and Technical Standards, Section 6.5

The Draft CDP has highlighted the significant number of protected species and habitats within County Donegal, with Natura 2000 sites comprising approximately 18.5% of all land cover of the County. The area of influence of Part B: Appendix 3, Section 6.5 is indicated in Figure 8.2.1 of the Draft Plan. It is distributed throughout the county and covers the greater part of its extent. In light of this information, and exercising the precautionary principle, screening of Part B: Appendix 3, Development Guidelines and Technical Standards, Section 6.5 for potentially significant affects on Natura 2000 sites, either alone or in combination with other projects or plans, in the context of the European sites' qualifying interests and possible effects on the integrity of the Natura network cannot conclude beyond reasonable scientific doubt that there will be no significant affects on Natura 2000 sites within the zone of influence of Section 6.5.

It is therefore concluded that Part B: Appendix 3, Development Guidelines and Technical Standards, Section 6.5 should proceed to Stage 2 Appropriate Assessment, including the preparation of this NIR.

Stage 2 Appropriate Assessment of Part B: Appendix 3, Development Guidelines and Technical Standards, Section 6.5

Stage 2 Appropriate Assessment will run concurrently with Strategic Environmental Assessment (SEA) of Part B: Appendix 3, Development Guidelines and Technical Standards, Section 6.5 in order that potential impacts can be re-examined throughout the process. The scope of the stage 2 assessment has been informed by consultations with relevant statutory authorities and in particular the submission received from the Minister of the Department of Housing, Planning and Local Government, (our reference PB12). This NIR has taken account of all submissions received.

The following sections of the NIR set out the information required to support an appropriate assessment of Part B: Appendix 3, Development Guidelines and Technical Standards, Section 6.5 of the Draft CDP, and determine potential significant affects on the integrity of the Natura 2000 network. Such information is based on the best available scientific data. However, due to the strategic nature of the Draft CDP and Part B: Appendix 3, Development Guidelines and Technical Standards, Section 6.5, the potential for impact on Natura 2000 sites may be uncertain, and therefore throughout the assessment the precautionary principle is applied. The precautionary principle means, in essence, that action may be taken to protect against risks to human health and/or the environment, even in the absence of conclusive scientific evidence as to the existence, or extent, of those risks. Thus the onus is on the planning authority, as the proponent of the plan, to demonstrate beyond reasonable doubt that Technical Standards Section 6.5 of the Draft CDP will not give rise to significant adverse affects, and that any avoidance/mitigation measures will work.

The information presented below is set out in a structured fashion as suggested in Guidance for Planning Authorities. In summary, the sections that follow present:

- **County Profile** - a description of the geographic area to which the plan applies
- **Draft CDP 2018-2024 Part B: Appendix 3, Development Guidelines and Technical Standards, Section 6.5** - Outline of Technical Standards Section 6.5 and environmental implications
- **Natura 2000 Sites** - Identification of relevant Natura sites, their conservation objectives and threats to site integrity

- **Appropriate Assessment** - A summary of impact assessment methodology and its application to Part B: Appendix 3, Development Guidelines and Technical Standards, Section 6.5
- **Cumulative and in Combination Effects** - Assessment of effects in the context of other regional or national plans or strategies
- **Mitigation Measures** - An outline of any mitigation required to prevent impacts on the Natura 2000 Network

3. COUNTY PROFILE

County Donegal, covering an area of c.484,559.33ha, is the largest county in Ulster, and the fourth largest county in Ireland. It is located on the north western seaboard and is bounded on the southwest, west and north by the Atlantic Ocean, with an extensive indented coastline (approximately 1,132km). Located in the Border Region, County Donegal shares 93% of its entire land boundary with Northern Ireland (counties Derry, Tyrone, Fermanagh) and the remaining 7% (or 9km stretch) is with County Leitrim at its most southerly point. The County is therefore a key interface between the two jurisdictions and plays an important physical and cultural role in cross-border communications.

The Census of Population 2016 preliminary results was published in July 2016. The town and country figures are due to be published in April 2017. Donegal's population is estimated at 158,755 in the 2016 census (CSO), a 1.5% decrease since 2011. The current figures for the 2011 census show that the county has a predominantly weak urban structure with a large number of small towns, with just 9 settlements falling into the aggregate urban area category of over 1,500 inhabitants. Letterkenny is the largest urban centre in Donegal with a population of 19,588. The county is thus predominantly rural in character with 33.8 persons per sq km compared to a State average of 67 persons per sq km. This is also reflected in the high numbers of households that are not connected to public sewers and that rely on on-site wastewater treatment. Approximately 38% of the land is in agricultural use, predominantly in the east of the county. Grass production and rough grazing for cattle and sheep are the main activities. Commercial forestry is also a significant land use in the county, and fishing is a significant employment sector. However with a peripheral location and a decline in traditional industries and services, Donegal is presented with many challenges as it looks to the future.

Donegal is nationally recognized for the beauty of its landscape and coastline. The county is dominated by a mountainous spine with a complex geology consisting predominantly of granite and quartzite peaks running northeast to southwest. These are comprised of the Derryveagh range to the north, within which Glenveagh National Park is situated, and the Blue Stacks, extending from Ballybofey west to Gleann Cholm Cille (Glencolmcille) in the south. This has resulted in spectacular scenery in coastal locations such as Slieve League with sea cliffs rising to over 600m.

The County also has a rich and distinctive cultural heritage. Eleven of Donegal's coastal Islands were inhabited according to the 2011 census, and Donegal contains the second largest Gaeltacht in the country, with Gaeltacht areas distributed from Fanad Head on the north coast to Gleann Cholm Cille (Glencolmcille) in the south of the county. The Gaeltacht with its unique cultural, traditional and linguistic heritage occupies almost a third of the County.

In addition to their cultural heritage, the islands also constitute a major natural resource, home to many protected bird and plant species. Oileán Thoraí (Tory Island), Inishbofin and Inishmeane are strongholds of the corncrake and Árainn Mhór (Aranmore) is home to Hart's saxifrage, a subspecies unique to Ireland.

The western seaboard also supports a diversity of other habitats including extensive dune systems, machair, dune scrub, salt marshes and wetlands. Lough Swilly is of major ornithological importance for wintering waterbirds with 18 species regularly occurring in nationally important numbers and three species in internationally important numbers.

The county has many pristine rivers and lakes. These oligotrophic surface waters are home to rare and threatened animals including the freshwater pearl mussel, arctic charr, red throated diver and otter, and to rare aquatic plants such as the slender naiad.

Blanket bog is dominant over much of the higher land in the county. In addition to its distinctive flora, it provides habitat for red deer, Irish hare, red grouse, golden plover, merlin, peregrine falcon and more recently the golden eagle.

Table 2 lists the number of sites in Donegal with various environmental designations. While the total number of designations indicates the resource value and high quality of the environment in Donegal, this AA is concerned with the Natura 2000 designations i.e. SACs and SPAs.

Table 2: Environmental Designations in Donegal

DESIGNATION	NUMBER OF SITES
Natural Heritage Areas (NHAs)	14
Proposed NHAs	78
National Park	1
Ramsar Sites	4
Nature Reserves (officially designated)	7
Nature Reserves (un-designated)	3
Wildfowl Sanctuaries	6
Biogenetic Reserves	1
Refuges for Fauna	1
Irish Geological Heritage Sites	135
Special Areas of Conservation (SACs)	47
Special Protection Areas (SPAs)	26

4. Outline of Part B: App 3, Development Guidelines and Technical Standards, Section 6.5

The energy strategy of the Draft CDP has been prepared in the context of the European and national corporate policy frameworks as set out in: 'The EU Renewable Energy Directive, 2009' (EU); and the Department of Communications, Energy and Natural Resources' 'Strategy for Renewable Energy 2012-2020', and White Paper entitled 'Ireland's Transition to a Low Carbon Energy Future, 2015-2030'. These documents set out a framework to guide energy policy between now and 2030, with the aim of improving Ireland's renewable energy output and reducing carbon emissions in accordance with the EU objective of a low carbon society by 2050. It aims to facilitate the development of a diverse energy portfolio based on wind, solar, hydro, wave, tidal, biomass, bio energy, oil and gas.

In keeping with the policy frameworks, Donegal recognises the environmental benefits and economic opportunities arising from the development of available renewable energy resources, particularly wind, wave, tidal and hydro energy. County Donegal is ideally situated on the North-West Atlantic coast to take advantage of its sources of renewable energies, and the associated significant employment and economic opportunities arising as a result. Notwithstanding this strategic context, the value of Donegal's natural, built and cultural heritage must also be considered in the preparation of this policy framework. Renewable energy proposals should be plan-led and focus in particular on:

- Identification of the best sites for renewable energies and those sites for protection.
- Use the Landscape Character Assessment (LCA) to evaluate landscape types (Donegal County Council completed its LCA in January, 2016 and this is a vital tool in formulating wind energy policies).
- Diversifying the renewable energy portfolio and enhancing the grid connections to harness all forms of renewable energy.
- Meeting the challenges of re-powering larger turbines on the sites of existing turbines which are decommissioned upon reaching their end of life.

Donegal already generates significant wind energy outputs relative to other counties in Ireland and has become an energy exporter, despite the limited available electricity grid infrastructure in the County and significant environmental and heritage designations covering over one-third of the County. It is therefore challenging to achieve a balanced approach to the identification of further suitable locations that will not detract from the scenic and environmental resource of the County.

The Council's approach to wind energy has been prepared having regard to the Planning Guidelines on Wind Energy Development, 2006 prepared by the (then) Department of the Environment, Heritage and Local Government and has been augmented by the evidence base made up *inter alia* by the landscape character assessment process, and the 'Windfarm Development Guidance' report (June 2014) of the Donegal County Council Interreg IVa project, 'Practical Implementation of Freshwater Pearl Mussel Measures'.

Arising from this process, and in accordance with E-P-12, Map 8.2.1 and 'Wind Energy' section of Appendix 3, Development Guidelines and Technical Standards, Part B, Objectives and Policies of the Plan, the Plan identifies the following policy/zoning areas for consideration of proposed new wind farm developments, and alterations to existing wind farms within the County.

(1) 'Open to Consideration': Within these locations, wind farm developments are open to consideration, subject to compliance with other objectives and policies of the Plan. They have been identified having regard to a range of factors, including natural heritage designations and landscape sensitivity.

(2) 'Acceptable for augmentation of/improvements to existing windfarms': Within these locations, wind farm development would be unacceptable save as augmentation of, or improvements to, existing wind farm development subject to compliance with all other objectives and policies of the Plan.

(3) 'Not acceptable': Locations where Wind Farm Development would be unacceptable having regard to their significant environmental, heritage and landscape constraints. These include; Special Areas of Conservation (SAC's) and Special Protection Areas (Natura 2000) sites, Natural Heritage Areas, areas of high and medium landscape sensitivity, Fresh Water Pearl Mussel catchments.

Policies and objectives in relation to Energy, including wind energy, have been assessed in the *Appropriate Assessment Natura Impact Report of the Draft County Donegal Development Plan 2018–2024*. Where it has been required mitigation has been included to ensure compliance with Article 6 of the Habitats Directive. This present assessment is specifically in relation to Part B: Appendix 3, Section 6.5.

The relevant text in Part B: Appendix 3, Section 6.5 is cited below for ease of reference.

6.5 Wind turbines must meet the requirements and standards set out in the DEHLG Wind Energy Development Guidelines 2006, or any subsequent related Guidelines and in addition must not be located within:

- (a) The zone of visual influence (ZVI) of the Glenveagh National Park.
- (b) The zone of influence/flight path at Donegal Airport.
- (c) Areas identified as locations where wind farm development would not be acceptable as identified on map 8.2.1, chapter 8 of the County Development Plan 2018-2024.
- (d) Special Areas of Conservation (SACs) nor Special Protection Areas (SPAs)
- (e) The 6 Fresh Water Pearl Mussel (S.I. 296 of 2009) catchments contained in the Freshwater Pearl Mussel Sub-Basin Management Plans for Clady, Eske, Glaskeelin, Leannan, Owencarrow and Owenea.
- (f) A set back distance of ten times the tip height of proposed turbines from residential properties and other centres of human habitation.

In relation to windfarm development Map 8.2.1 of the Draft CDP shows the areas within County Donegal that are

- acceptable for augmentation of/improvements to existing windfarms
- not acceptable
- open to consideration

The locations of SACs and SPAs (Appendix D), Freshwater Pearl Mussel catchments (Appendix E), and the area of influence of Section 6.5 (f) in the case of 100m turbine tip heights (Appendix F) are also shown.

Two associated definitions contained in Paragraph 6.6 are also relevant and copied below for ease of reference:

6.6 Glenveagh National Park: Zone of Visual Influence

Definition:-

The environmental and visual character of Glenveagh National Park consists of the geographic extent of the park and its immediate environs. The implementation of the relevant policy should not be interpreted as relating to lands with limited physical or visual connection to the park. The onus is on the applicant to demonstrate the extent of the potential impact a proposed wind energy development has on the National Park.

Centre of Human Habitation:

Definition:-

'Centre of human habitation' includes schools, hospitals, churches, residential buildings or buildings used for public assembly.'

5. RELEVANT NATURA 2000 SITES

Zone of Influence of Part B: Appendix 3, Section 6.5 of the Plan

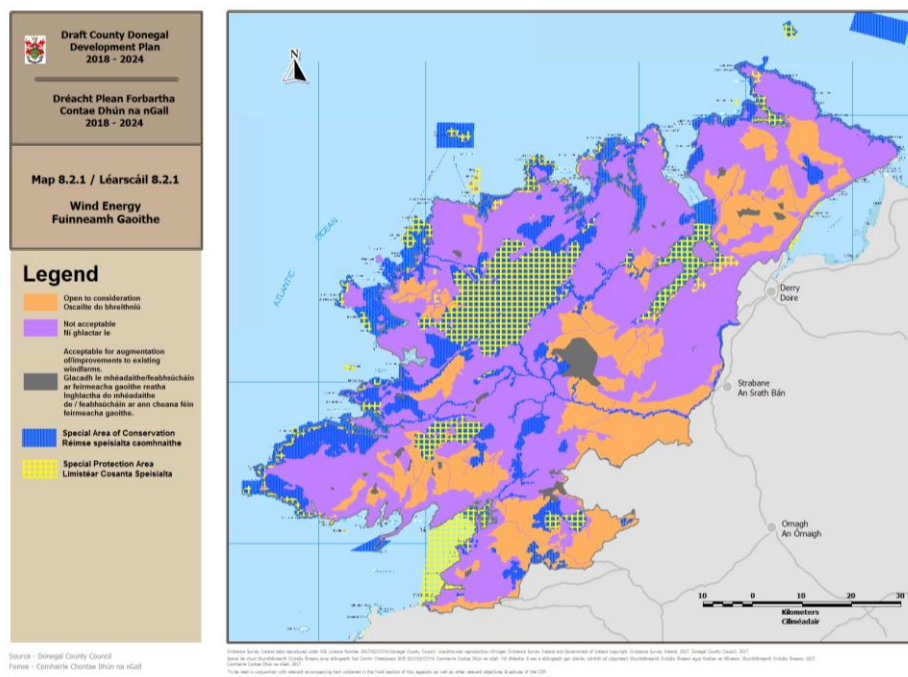
For the purposes of AA, any Natura 2000 site within or adjacent to the plan or project area, and any Natura 2000 site within the likely zone of impact of the plan or project are to be included in the assessment. A distance of 15km is currently recommended as a minimum for inclusion in the case of plans, but Natura 2000 sites that are more than 15km from the plan must also be considered depending on the likely impacts of the plan or project, the sensitivities of the ecological receptors, and the potential for in combination effects. In considering relevant sites the precautionary principle must apply.

Relevant Natura 2000 sites in County Donegal and within a surrounding 15km buffer, or a wider zone of influence where potential impact is considered possible, are tabulated in Appendix 1. Datasets available on the National Parks and Wildlife Service website (<http://www.npws.ie>) and on the Joint Nature Conservation Committee/Department of Environment, Food and Rural Affairs website (<http://jncc.defra.gov.uk>) have been used to identify sites, and to collate site specific information. The following information is included for each Natura 2000 site:

- Site code
- Site name
- Qualifying interests
- Conservation objectives
- Threats to site integrity

At present there are 47 SAC's and 26 SPA's within, or partly within the County. A further 41 SACs and 12 SPAs within the zone of influence of the plan have been included. These Natura 2000 sites are shown in Map 1 below. More distant Natura sites are assessed on a case by case basis and using the Source-Pathway-Receptor model to determine the potential for any significant impact.

MAP 1: European sites within County Donegal in relation to windfarm development areas



Source: Appendix F of the Draft Plan

Assessment of Likely Significant Affect

The sub-paragraphs of Part B: Appendix 3, Section 6.5 are individually screened to assess for likely significant affects on the Natura 2000 network. The assessment considers the implications for relevant Natura 2000 sites, particularly in respect of their qualifying interests and conservation objectives, and the integrity of the wider Natura network. Information on current conservation status and threats to site integrity also form part of the assessment, and possible in combination effects with other plans. When considering likely significant affects, in situ and ex situ effects are assessed. The overall aim of the assessment is to predict consequences that can reasonably be foreseen due to implementation of Part B: Appendix 3, Section 6.5. It should be noted however that Section 6.5 is strategic in nature and the impact assessment therefore reflects this in its generalised approach.

The overall aim of the Habitats Directive is to maintain or restore the favourable conservation status of habitats and species of community interest in the Natura 2000 network. Favourable conservation status is defined in generic terms as follows.

Favourable conservation status of a habitat is achieved when:

- its natural range, and area it covers within that range, are stable or increasing, and
- the specific structure and functions which are necessary for its long-term maintenance exist and are likely to continue to exist for the foreseeable future, and
- the conservation status of its typical species is favourable.

The favourable conservation status of a species is achieved when:

- population dynamics data on the species concerned indicate that it is maintaining itself on a long-term basis as a viable component of its natural habitats, and
- the natural range of the species is neither being reduced nor is likely to be reduced for the foreseeable future, and
- there is, and will probably continue to be, a sufficiently large habitat to maintain its populations on a long-term basis.

For many sites in the Natura network, site-specific conservation objectives have been set and these are available on www.npws.ie. In the absence of site-specific objectives and targets the generic objectives above apply. Since targets for attributes may change as more information becomes available, it is essential that the date and version of conservation objectives are cited. An appropriate assessment based on conservation objectives will remain valid even if the targets are subsequently updated, providing they were the most recent objectives available when the assessment was carried out.

Guidance sets out direct and indirect types of impacts that are to be considered in the assessment process. These impacts include loss of habitat area, fragmentation of habitats, disturbance of species, changes to population structure or density, and changes in quantity or quality of the water resource. The potential for such impacts arises from many policy areas including energy strategies, and infrastructural development including wind farms. These activities can give rise to land take through development of natural sites; loss of staging sites important to species migration or recruitment; habitat degradation through pollution or resource depletion; species disturbance or disruption of food chains. Guidance documents also provide indicators for assessing the significance of any impact.

Environmental pressures may arise from infrastructural developments; expansion of sustainable or alternative energy sources and transmission networks; increased eco-tourism and recreational activity. All of these pressures could potentially give rise to significant effects on the Natura network and require careful management and mitigation if necessary.

Where likely significant affects are identified, alternatives to the relevant policy or objective (including rejection) are considered that would avoid any impact, or mitigation measures are formulated to offset any likely impact.

6. Appropriate Assessment of Part B: Appendix 3, Development Guidelines and Technical Standards, Section 6.5

The screening assessment is set out in Appendix 2. It sets out the subparagraphs of Part B: Appendix 3, Section 6.5 of the Draft Plan and the Natura 2000 sites that could be affected; the nature of any potential impacts, including in combination affects; an assessment of the significance of any effect; and where appropriate the mitigation required to avoid impact. The findings of this assessment process are outlined in *Summary Findings of Stage 2 Assessment* below. The scope of this assessment is to consider implications at the strategic level of Section 6.5, the main goal of which is to direct windfarm development to suitable locations, and restrict windfarm development at specified locations.

Summary Findings of Stage 2 Assessment

Part B: Appendix 3, Section 6.5 seeks to identify areas appropriate for windfarm development and restrict development in areas considered unsuitable. Preventing development in these areas, in particular remote upland areas, is likely to have beneficial or neutral environmental effects. The Development Guidelines and Technical Standards in Section 6.5 are likely to prevent impacts that may arise through:

- land take for pylons and associated infrastructure
- drainage and changes to local hydrology
- Noise pollution and potential behavioural/feeding disturbance
- disturbance due to operation of turbines and potential bird impact
- disturbance due to construction and maintenance activity
- disturbance due to secondary pressures such as recreational use associated with enhanced access routes
- Increased erosional losses to surface waters due to enhanced drainage connectivity.

The Draft CDP has been subjected to an Appropriate Assessment. The plan recognizes the European and National value of the Natura 2000 network, and also the need to protect the habitats of important species in the wider countryside outside designated areas. The aim of the Natural Heritage strategy of the Draft CDP is to conserve, protect and manage the County's natural heritage for future generations and encourage appreciation and enjoyment of these resources. It sets out the role of Article 6 of the Habitats Directive (92/43/EEC) in requiring the protection of the designated species and habitats of European sites, and explicitly states that any plan or project with the potential to impact on the conservation objectives of designated sites is required to take appropriate steps to avoid the deterioration of natural habitats and the habitats of species as well as significant disturbance of species for which areas have been designated and will be subject to Appropriate Assessment. The requirement to comply with Article 6 of the Habitats Directive is an explicit objective of the Natural Heritage strategy.

The Draft CDP has also incorporated significant environmental mitigation measures in the form of proactive objectives and policies. These reflect the consideration given to potential environmental impacts throughout the iterative process of plan development which has guided the formulation and environmental assessment of all policies and objectives. They are relevant to mitigation of any potential environmental impact of Part B: Appendix 3, Development Guidelines and Technical Standards, Section 6.5.

In relation to 'Part B: Appendix 3, Development Guidelines and Technical Standards, Section 6.5', this NIR finds that potential significant adverse affects are unlikely.

In Combination Effects

Where a plan or project is likely to have a significant effect on a European site, either alone or in combination with other plans or projects it is subject to AA. The in combination test should include completed, approved but uncompleted, or proposed (but not yet approved) plans or projects if sufficient detail is available for assessment. The consideration of cumulative effects includes the sum total of influences affecting the condition of Natura sites.

Cumulative effects are perhaps most obvious in the case of space crowding of activities that taken in isolation would be sub-threshold in terms of significance in affecting Natura sites. However, long delays between cause and effect can result in time lags for in combination effects to materialise in some instances (e.g. changes in flow regimes due to forestry or drainage). Some in combination effects may be synergistic (e.g. lower flows combined with increased pollutant loads). Other effects can be secondary in nature (e.g. windfarm road access resulting in recreational disturbance of previously inaccessible areas). In all cases a precautionary approach is taken in the assessment.

In combination effects are considered and set out in Appendix 2 for each element of Part B: Appendix 3, Development Guidelines and Technical Standards, Section 6.5. Relevant plans that could contribute to in combination effects in conjunction with the Draft CDP have been detailed and assessed in *Appropriate Assessment Natura Impact Report of the Draft County Donegal Development Plan 2018–2024* (May 2017).

Given that Part B: Appendix 3, Development Guidelines and Technical Standards, Section 6.5 relate to significant reduction in the potential development of windfarms in identified locations, it is likely to have a positive affect in reducing potential in-combination impacts. However, it is also clear from a review of the policies and objectives of the Draft CDP that there are sufficient safeguards (additional policies and mitigation) in place to ensure that there will not be any significant in-combination affects on the Natura 2000 network.

Mitigation Measures

Sustainable development while protecting and enhancing the environment are core tenets of the Draft CDP and these aims have informed the formulation of policies and objectives in all policy areas from the outset of plan preparation.

In line with policy frameworks, proposed windfarm development is directed to robust receiving environments with sufficient capacity to absorb such development. This is in keeping with the principle of avoidance of negative effects in the first instance.

The drafting and redrafting of policies and objectives in an iterative process that considers the environment and Natura 2000 sites at each stage is the primary method of mitigating adverse effects on European sites. Where potential significant adverse effects are deemed possible, alternative or revised policies and objectives are considered. Where necessary, additional policies or objectives have been drafted as mitigating measures to prevent possible impact on Natura sites and to ensure compliance with the requirements of Article 6 of the Habitats Directive.

Many objectives and policies in the Draft CDP specifically require compliance with Article 6 of the Habitats Directive, or impose constraints of no impact on Natura 2000 sites.

A suite of objectives and policies dealing with natural heritage (NH-O-1 to NH-O-11 and NH-P-1 to NH-P-5, NH-P-10 and NH-P-18) provide explicit and strong protection for terrestrial, aquatic, water-dependent, and marine habitats and ecosystems. In particular they provide for protection of the Natura network of sites through compliance with Article 6 of the Habitats Directive, but also for conservation of a wider spectrum of habitats and species of significance

in order to maintain biodiversity in general. Implementation of these objectives and policies will be critical for protection of SACs, SPAs, NHAs, pNHAs and RAMSAR sites, WFD Protected Areas, sites of high environmental status and for protection of species identified in the Wildlife Acts and Flora Protection Order.

Objectives WES-O-4, WES-O-5, WES-O-6, and WES-O-7, and policies WES-P-4, WES-P-5, and WES-P-8 also provide for environmental protection. In particular they ensure that surface and groundwaters will be protected through implementation of the relevant River Basin Management Plan (RBMP) and Programme of Measures, and that water quality will be maintained, protected and enhanced.

Some 27 of the objectives and policies set out in the Draft CDP specifically include compliance with Article 6 of the Habitats Directive as a condition of implementation. A further 10 objectives or policies impose a constraint of no impact on Natura 2000 sites. In addition wider environmental constraints are referenced throughout many of the objectives and policies of the Draft CDP, including compliance with RBMPs and Programmes of Measures, Freshwater Pearl Mussel Sub-Basin Plans, Shellfish Pollution Reduction Programmes, and EU Biodiversity Strategy.

Mitigating policies clearly indicate that where any physical development, including windfarm development, has the potential to significantly impact on a Natura 2000 site, it will be subject to an individual AA process, as defined by Article 6(3) and (4) of the Habitats Directive. Where it is found that the plan or project has the potential to directly or indirectly impact on the integrity of a Natura 2000 site, the appropriate mitigation will be through avoidance. If avoidance is not possible, mitigation in the form of alternatives to the proposed plan or project must be sought. In considering alternative solutions the plan recognizes that the conservation objectives and status of the Natura 2000 site will outweigh any considerations of cost, delays or other aspects of an alternative solution. The planning authority shall not, therefore, limit its consideration of alternative solutions to those suggested by the project or plan proponents. It is the member state's responsibility to consider alternative solutions, which could be located within different areas.

The Draft CDP therefore contains substantial environmental mitigation measures in proactive objectives and policies. Account has been taken of the potential for environmental impact throughout the iterative process of plan development and this has guided the drafting of policies and objectives. Mitigation arising from Stage 2 Appropriate Assessment of the Draft CDP is detailed in *Appropriate Assessment Natura Impact Report of the Draft County Donegal Development Plan 2018–2024* (May 2017).

Therefore in the context of the Draft CDP, there is sufficient mitigation in place to ensure there will be no significant in situ or ex situ effects on the Natura 2000 network as a result of the implementation of Part B: Appendix 3, Development Guidelines and Technical Standards, Section 6.5.

7. Conclusion of Stage 2 – Appropriate Assessment & Natura Impact Report

This Appropriate Assessment has been carried out on Part B: Appendix 3, Development Guidelines and Technical Standards, Section 6.5 of the Draft County Donegal Development Plan for 2018-2024. Preparation of the assessment was undertaken using experienced ecological expertise to identify any risks of significant adverse effects on the Natura network of European sites. A review of conservation objectives, qualifying interests and threats to site integrity for relevant Natura 2000 sites in the County and within the zone of influence of Part B: Appendix 3, Development Guidelines and Technical Standards, Section 6.5 was undertaken to identify sites that might be impacted by these Development Guidelines and Technical Standards of the Draft Plan. Cumulative and in-combination effects were also considered.

Therefore considering Part B: Appendix 3, Development Guidelines and Technical Standards, Section 6.5 of the Draft CDP and the mitigation measures included, it was found that no direct, indirect or cumulative significant effects on Natura 2000 sites were likely.

Appropriate Assessment Conclusion Statement

This Appropriate Assessment Natura Impact Report of Part B: Appendix 3; Development Guidelines and Technical Standards; Section 6.5 of the Draft County Donegal Development Plan 2018-2024 concludes a Finding of No Significant Effects following the completion of stage 2 of the process. Any potential impact on the Natura 2000 network has been mitigated against through policies and objectives contained in the Draft County Donegal Development Plan 2018-2024. As a result, there is no requirement to proceed to stage 3 of the AA Process.

This assessment should be read in conjunction with the Draft County Donegal Development Plan 2018-2024, the *Appropriate Assessment Natura Impact Report of the Draft County Donegal Development Plan 2018–2024* (May 2017), the *Natura Impact Report of Proposed Material Alterations to the Draft County Donegal Development Plan 2018-2024* (February 2018) and the accompanying SEA *Environmental Report of Part B: Appendix 3; Development Guidelines and Technical Standards; Section 6.5 of the Draft County Donegal Development Plan 2018-2024* prepared in compliance with the requirements of the SEA Directive.

8. Appendix 1. Natura 2000 Sites Relevant to this Appropriate Assessment

County Donegal: Special Areas of Conservation (SACs)

Site code	Site name	Qualifying interests	Conservation objectives	Threats to site integrity
111	Aran Island (Donegal) Cliffs	1230 Vegetated sea cliffs of the Atlantic and Baltic coasts 4030 European dry heaths 4060 Alpine and Boreal heaths 8210 Calcareous rocky slopes with chasmophytic vegetation 8220 Siliceous rocky slopes with chasmophytic vegetation 8330 Submerged or partially submerged sea caves	To maintain or restore the favourable conservation condition of the Qualifying Interests for which the SAC has been selected which are defined by the list of attributes and targets in the site-specific conservation objectives (NPWS (2016) Conservation Objectives: Aran Island (Donegal) Cliffs SAC 000111. Version 1. National Parks and Wildlife Service, Department of Arts, Heritage, Regional, Rural and Gaeltacht Affairs), and in relevant supporting documentation. To maintain the extent, species richness and biodiversity of the entire site. To establish effective liaison and co-operation with landowners, legal users and relevant authorities.	Changes in local hydrology including drainage; peat extraction; overgrazing; forestry; burning; direct loss of habitat to development; arterial drainage/water abstraction/lowering of the regional water table; agricultural reclamation. Introduction of alien invasive species. Illegal Dumping. Quarrying/removal of sand. Aquaculture.; leisure fishing. Outdoor sports and leisure activities, recreational activities; urbanised areas, human habitation; utility and service lines
115	Ballintra	4030 European dry heaths 8240 Limestone pavements*	To maintain or restore the favourable conservation condition of the Annex I habitat(s) and/or the Annex II species for which the SAC has been selected (NPWS (2016) Conservation objectives for Ballintra SAC [000115]. Generic Version 5.0. Department of Arts, Heritage, Regional, Rural and Gaeltacht Affairs).	Changes in local hydrology including drainage; peat extraction; overgrazing; forestry; burning; direct loss of habitat to development; arterial drainage/water abstraction/lowering of the regional water table; agricultural reclamation; agricultural improvements; agricultural abandonment; under grazing; quarrying on esker ridges and limestone

Site code	Site name	Qualifying interests	Conservation objectives	Threats to site integrity
			To maintain the extent, species richness and biodiversity of the entire site. To establish effective liaison and co-operation with landowners, legal users and relevant authorities.	pavement; bracken & scrub encroachment. Introduction of alien invasive species. Illegal Dumping.
116	Ballyarr Wood	91A0 Old sessile oak woods with Ilex and Blechnum in the British Isles	To maintain or restore the favourable conservation condition of the Annex I habitat(s) and/or the Annex II species for which the SAC has been selected (NPWS (2016) Conservation objectives for Ballyarr Wood SAC [000116]. Generic Version 5.0. Department of Arts, Heritage, Regional, Rural and Gaeltacht Affairs). To maintain the extent, species richness and biodiversity of the site. To provide facilities on site for the visiting public so as to improve its recreational use and potential educational value. To establish effective liaison and co-operation with neighbouring landowners, legal users and relevant authorities.	Direct loss of habitat to development; amenity/recreation use; invasive species; lack of/inappropriate woodland development; overgrazing (deer). Introduction of alien invasive species. Illegal Dumping. Felling/Removal of Trees.
129	Croaghonagh Bog	7130 Blanket bogs (* if active bog)	To maintain or restore the favourable conservation condition of the Annex I habitat(s) and/or the Annex II species for which the SAC has been selected (NPWS (2016) Conservation objectives for Croaghonagh Bog SAC [000129]. Generic Version 5.0. Department of Arts, Heritage, Regional, Rural and Gaeltacht Affairs).	Changes in local hydrology including drainage; peat extraction; overgrazing; forestry; burning; direct loss of habitat to development; arterial drainage/water abstraction/lowering of the regional water table; agricultural reclamation. Introduction of alien invasive species. Illegal Dumping.

Site code	Site name	Qualifying interests	Conservation objectives	Threats to site integrity
133	Donegal Bay Murvagh	1140 Mudflats and sandflats not covered by seawater at low tide 2130 Fixed coastal dunes with herbaceous vegetation (grey dunes)* 2190 Humid dune slacks 1365 Harbour Seal (<i>Phoca vitulina</i>)	To maintain or restore the favourable conservation condition of the Qualifying Interests for which the SAC has been selected which are defined by the list of attributes and targets in the site-specific conservation objectives (NPWS (2012) Conservation Objectives: Donegal Bay (Murvagh) SAC 000133. Version 1.0. National Parks and Wildlife Service, Department of Arts, Heritage and the Gaeltacht), and in relevant supporting documentation.	Agricultural improvements/reclamation; drainage/changes in local hydrology; water quality/pollution (including groundwater); agricultural abandonment; overgrazing/undergrazing; direct loss of habitat to development; bracken & scrub encroachment; turf/peat extraction in fens; impacts to local geology/geomorphology (e.g. quarrying/rock blasting) for turloughs & groundwater fed fens. Introduction of alien invasive species Illegal Dumping Burning Quarrying/removal of sand Aquaculture
138	Durnesh Lough	1150 Coastal lagoons* 6410 Molinia meadows on calcareous, peaty or clayey-silt-laden soils (Molinion caeruleae)	To maintain or restore the favourable conservation condition of the Qualifying Interests for which the SAC has been selected which are defined by the list of attributes and targets in the site-specific conservation objectives (NPWS (2016) Conservation Objectives: Durnesh Lough SAC 000138. Version 1. National Parks and Wildlife Service, Department of Arts, Heritage, Regional, Rural and Gaeltacht Affairs), and in relevant supporting documentation. To maintain the extent, species richness and biodiversity of the entire site. To establish effective liaison and co-operation with	Agricultural improvements/reclamation; drainage/changes in local hydrology including water abstraction; erosion (natural and anthropogenic); water quality/pollution; agricultural abandonment; overgrazing/undergrazing; direct loss of habitat to development; bracken & scrub encroachment; amenity/recreation use; tourism-related development; peat extraction; forestry; burning; arterial drainage/water abstraction/lowering of the regional water table; agricultural reclamation. Introduction of alien invasive species Illegal Dumping Aquaculture

Site code	Site name	Qualifying interests	Conservation objectives	Threats to site integrity
			landowners, legal users and relevant authorities.	
140	Fawnboy Bog/Lough Nacung	1029 Freshwater Pearl Mussel <i>Margaritifera margaritifera</i> 4010 Northern Atlantic wet heaths with <i>Erica tetralix</i> 7130 Blanket bogs (* if active bog) 7150 Depressions on peat substrates of the Rhynchosporion	To maintain or restore the favourable conservation condition of the Qualifying Interests for which the SAC has been selected which are defined by the list of attributes and targets in the site-specific conservation objectives (NPWS (2016) Conservation Objectives: Fawnboy Bog/Lough Nacung SAC 000140. Version 1. National Parks and Wildlife Service, Department of Arts, Heritage, Regional, Rural and Gaeltacht Affairs), and in relevant supporting documentation.	Changes in local hydrology including drainage; water quality/pollution; peat extraction; overgrazing; forestry; burning; direct loss of habitat to development; arterial drainage/water abstraction/lowering of the regional water table; agricultural reclamation. Introduction of alien invasive species Illegal Dumping
142	Gannivegil Bog	3110 Oligotrophic waters containing very few minerals of sandy plains (<i>Littorelletalia uniflorae</i>) 4010 Northern Atlantic wet heaths with <i>Erica tetralix</i> 7130 Blanket bogs (* if active bog)	To maintain or restore the favourable conservation condition of the Annex I habitat(s) and/or the Annex II species for which the SAC has been selected (NPWS (2016) Conservation objectives for Gannivegil Bog SAC [000142]. Generic Version 5.0. Department of Arts, Heritage, Regional, Rural and Gaeltacht Affairs).	Changes in local hydrology including drainage; peat extraction; overgrazing; forestry; burning; direct loss of habitat to development; arterial drainage/water abstraction/lowering of the regional water table; agricultural reclamation. Introduction of alien invasive species Illegal Dumping Increased pollution/reduction in water quality
147	Horn Head & Rinclevan	1013 Geyer's Whorl Snail <i>Vertigo geyeri</i> 1364 Grey seal <i>Halichoerus grypus</i> 1395 Petalwort <i>Petalophyllum ralfsii</i> 1833 Slender Naiad <i>Najas flexilis</i> 2110 Embryonic shifting dunes 2120 Shifting dunes along the shoreline with <i>Ammophila arenaria</i> (white dunes) 2130 Fixed coastal dunes with	To maintain or restore the favourable conservation condition of the Qualifying Interests for which the SAC has been selected which are defined by the list of attributes and targets in the site-specific conservation objectives (NPWS (2014) Conservation Objectives: Horn Head and Rinclevan SAC 000147. Version 1. National	Agricultural improvements/reclamation; drainage/changes in local hydrology including water abstraction; erosion (natural and anthropogenic); water quality/pollution; agricultural abandonment; overgrazing/undergrazing; direct loss of habitat to development; bracken & scrub encroachment; amenity/recreation use;

Site code	Site name	Qualifying interests	Conservation objectives	Threats to site integrity
		herbaceous vegetation (grey dunes)* 2170 Dunes with <i>Salix repens</i> <i>ssp. argentea</i> (Salicion arenariae) 2190 Humid dune slacks 21A0 Machairs (* in Ireland)	Parks and Wildlife Service, Department of Arts, Heritage and the Gaeltacht), and in relevant supporting documentation.	tourism-related development. Introduction of alien invasive species Illegal Dumping Burning Quarrying/removal of sand Aquaculture
154	Inishtrahull	1230 Vegetated sea cliffs of the Atlantic and Baltic coasts.	To maintain or restore the favourable conservation condition of the Qualifying Interests for which the SAC has been selected which are defined by the list of attributes and targets in the site-specific conservation objectives (NPWS (2016) Conservation Objectives: Inishtrahull SAC 000154. Version 1. National Parks and Wildlife Service, Department of Arts, Heritage, Regional, Rural and Gaeltacht Affairs), and in relevant supporting documentation.	Changes in local hydrology including drainage; peat extraction; overgrazing; forestry; burning; direct loss of habitat to development; agricultural reclamation. Introduction of alien invasive species Illegal Dumping Quarrying/removal of sand Aquaculture
163	Lough Eske & Ardnamona Wood	3110 Oligotrophic waters containing very few minerals of sandy plains (<i>Littorelletalia uniflorae</i>); 7220 Petrifying springs with tufa formation (<i>Cratoneurion</i>)*; 91A0 Old sessile oak woods with <i>Ilex</i> and <i>Blechnum</i> in British Isles; 1029 Freshwater Pearl Mussel (<i>Margaritifera margaritifera</i>); 1106 Atlantic Salmon (<i>Salmon salar</i>); 1421 Killarney Fern (<i>Trichomanes speciosum</i>).	To maintain or restore the favourable conservation condition of the Annex I habitat(s) and/or the Annex II species for which the SAC has been selected (NPWS (2016) Conservation objectives for Lough Eske and Ardnamona Wood SAC [000163]. Generic Version 5.0. Department of Arts, Heritage, Regional, Rural and Gaeltacht Affairs).	Direct loss of habitat to development; amenity/recreation use; invasive species; lack of/inappropriate woodland development; overgrazing (deer). Introduction of alien invasive species Illegal Dumping Increased pollution/reduction in water quality Potential threats to Freshwater Pearl Mussel
164	Lough	2110 Embryonic shifting dunes	To maintain or restore the favourable	Recreational pressures and coastal defences;

Site code	Site name	Qualifying interests	Conservation objectives	Threats to site integrity
	Nagreany Dunes	2130 Fixed coastal dunes with herbaceous vegetation (grey dunes)* 2140 Decalcified fixed dunes with <i>Empetrum nigrum</i> * 2150 Atlantic decalcified fixed dunes (Calluno-Ulicetea)* 2170 Dunes with <i>Salix repens</i> ssp. <i>argentea</i> (Salicion arenariae) 3130 Oligotrophic to mesotrophic standing waters with vegetation of the Littorelletea uniflorae and/or Isoeto-Nanojuncetea 1833 Slender Naiad <i>Najas flexilis</i>	conservation condition of the Annex I habitat(s) and/or the Annex II species for which the SAC has been selected (NPWS (2016) Conservation objectives for Lough Nagreany Dunes SAC [000164]. Generic Version 5.0. Department of Arts, Heritage, Regional, Rural and Gaeltacht Affairs).	ecologically unsuitable grazing / undergrazing; agricultural intensification; , forestry and agricultural intensification; eutrophication and other activities linked to water pollution and hydrological change; Peat-cutting and forestry on peatland; drainage; acidification and peatland damage.
165	Lough Nillan Bog (Carrickatlieve)	3110 Oligotrophic waters containing very few minerals of sandy plains (Littorelletalia uniflorae) 7130 Blanket bogs (* if active bog)	To maintain or restore the favourable conservation condition of the Qualifying Interests for which the SAC has been selected which are defined by the list of attributes and targets in the site-specific conservation objectives (NPWS (2016) Conservation Objectives: Lough Nillan Bog (Carrickatlieve) SAC 000165. Version 1. National Parks and Wildlife Service, Department of Arts, Heritage, Regional, Rural and Gaeltacht Affairs), and in relevant supporting documentation.	Changes in local hydrology including drainage; peat extraction; overgrazing; forestry; burning; direct loss of habitat to development; arterial drainage/water abstraction/lowering of the regional water table; agricultural reclamation. Introduction of alien invasive species Illegal Dumping Increased pollution/reduction in water quality
168	Magheradrumman Bog	4010 Northern Atlantic wet heaths with <i>Erica tetralix</i> 7130 Blanket bogs (* if active bog)	To maintain or restore the favourable conservation condition of the Annex I habitat(s) and/or the Annex II species for which the SAC has been selected (NPWS (2016) Conservation objectives for Magheradrumman Bog SAC [000168].	Changes in local hydrology including drainage; peat extraction; overgrazing; forestry; burning; direct loss of habitat to development; arterial drainage/water abstraction/lowering of the regional water table; agricultural reclamation.

Site code	Site name	Qualifying interests	Conservation objectives	Threats to site integrity
			Generic Version 5.0. Department of Arts, Heritage, Regional, Rural and Gaeltacht Affairs).	Introduction of alien invasive species Illegal Dumping
172	Meenaguse / Ardbane Bog	7130 Blanket bogs (* if active bog)	To maintain or restore the favourable conservation condition of the Annex I habitat(s) and/or the Annex II species for which the SAC has been selected (NPWS (2016) Conservation objectives for Meenaguse/Ardbane Bog SAC [000172]. Generic Version 5.0. Department of Arts, Heritage, Regional, Rural and Gaeltacht Affairs).	Changes in local hydrology including drainage; peat extraction; overgrazing; forestry; burning; direct loss of habitat to development; arterial drainage/water abstraction/lowering of the regional water table; agricultural reclamation. Introduction of alien invasive species Illegal Dumping
173	Meentygrannagh Bog	7130 Blanket bogs (* if active bog) 7140 Transition mires and quaking bogs 7230 Alkaline fens 1393 Slender Green Feather-moss <i>Drepanocladus vernicosus</i>	To maintain or restore the favourable conservation condition of the Annex I habitat(s) and/or the Annex II species for which the SAC has been selected (NPWS (2016) Conservation objectives for Meentygrannagh Bog SAC [000173]. Generic Version 5.0. Department of Arts, Heritage, Regional, Rural and Gaeltacht Affairs).	Changes in local hydrology including drainage; peat extraction; overgrazing; forestry; burning; direct loss of habitat to development; arterial drainage/water abstraction/lowering of the regional water table; agricultural reclamation; agricultural improvements; water quality/pollution (including groundwater); agricultural abandonment; undergrazing; bracken & scrub encroachment; turf/peat extraction in fens; impacts to local geology/geomorphology (e.g. quarrying/rock blasting) for turloughs & groundwater fed fens. Introduction of alien invasive species Illegal Dumping
181	Raithlin O'Birne Island	1170 Reefs	To maintain or restore the favourable conservation condition of the Qualifying Interests for which the SAC has been	Changes in local hydrology including drainage; peat extraction; overgrazing; forestry; burning; direct loss of habitat to development;

Site code	Site name	Qualifying interests	Conservation objectives	Threats to site integrity
			selected which are defined by the list of attributes and targets in the site-specific conservation objectives (NPWS (201x) Conservation Objectives: Rathlin O'Birne Island SAC 000181. Version 1. National Parks and Wildlife Service, Department of Arts, Heritage and the Gaeltacht), and in relevant supporting documentation.	arterial drainage/water abstraction/lowering of the regional water table; agricultural reclamation. Introduction of alien invasive species Illegal Dumping Aquaculture
185	Sessiagh Lough	3130 Oligotrophic to mesotrophic standing waters with vegetation of the Littorelletea uniflorae and/or Isoeto-Nanojuncetea 1833 Slender Naiad <i>Najas flexilis</i>	To maintain or restore the favourable conservation condition of the Annex I habitat(s) and/or the Annex II species for which the SAC has been selected (NPWS (2016) Conservation objectives for Sessiagh Lough SAC [000185]. Generic Version 5.0. Department of Arts, Heritage, Regional, Rural and Gaeltacht Affairs).	Changes in local hydrology including drainage; peat extraction; overgrazing; forestry; burning; direct loss of habitat to development; arterial drainage/water abstraction/lowering of the regional water table; agricultural reclamation. Introduction of alien invasive species Illegal Dumping Increased pollution/reduction in water quality
189	Slieve League	1170 Reefs 1230 Vegetated sea cliffs of the Atlantic and Baltic coasts 4010 Northern Atlantic wet heaths with <i>Erica tetralix</i> 4060 Alpine and Boreal heaths 7130 Blanket bogs (* if active bog) 8210 Calcareous rocky slopes with chasmophytic vegetation 8220 Siliceous rocky slopes with chasmophytic vegetation	To maintain or restore the favourable conservation condition of the Qualifying Interests for which the SAC has been selected which are defined by the list of attributes and targets in the site-specific conservation objectives (NPWS (2015) Conservation Objectives: Slieve League SAC 000189. Version 1. National Parks and Wildlife Service, Department of Arts, Heritage and the Gaeltacht), and in relevant supporting documentation.	Changes in local hydrology including drainage; peat extraction; overgrazing; forestry; burning; direct loss of habitat to development; arterial drainage/water abstraction/lowering of the regional water table; agricultural reclamation. Introduction of alien invasive species Illegal Dumping Aquaculture
190	Slieve Tooley/	1014 Narrow-mouthed Whorl Snail <i>Vertigo angustior</i>	To maintain or restore the favourable conservation condition of the Qualifying	Agricultural improvements/reclamation; drainage/changes in local hydrology including

Site code	Site name	Qualifying interests	Conservation objectives	Threats to site integrity
	Tromore Island/ Loughros Beg Bay	1230 Vegetated sea cliffs of the Atlantic and Baltic coasts 1355 Otter <i>Lutra lutra</i> 1364 Grey Seal <i>Halichoerus grypus</i> 2110 Embryonic shifting dunes 2120 Shifting dunes along the shoreline with <i>Ammophila arenaria</i> (white dunes) 2140 Decalcified fixed dunes with <i>Empetrum nigrum</i> * 2150 Atlantic decalcified fixed dunes (Calluno-Ulicetea) 4060 Alpine and Boreal heaths 7130 Blanket bogs (* if active bog)	Interests for which the SAC has been selected which are defined by the list of attributes and targets in the site-specific conservation objectives (NPWS (2015) Conservation Objectives: Slieve Tooley/Tormore Island/Loughros Beg Bay SAC 000190. Version 1. National Parks and Wildlife Service, Department of Arts, Heritage and the Gaeltacht), and in relevant supporting documentation.	water abstraction; erosion (natural and anthropogenic); water quality/pollution; agricultural abandonment; overgrazing/undergrazing; direct loss of habitat to development; bracken & scrub encroachment; amenity/recreation use; tourism-related development; peat extraction; forestry; burning; arterial drainage/water abstraction/lowering of the regional water table; agricultural reclamation. Introduction of alien invasive species Illegal Dumping Burning Quarrying/removal of sand Aquaculture
191	St. John's Point	1160 Large shallow inlets and bays 1170 Reefs 6210 Semi-natural dry grasslands and scrubland facies on calcareous substrates (Festuco-Brometalia) (* important orchid sites) 6410 <i>Molinia</i> meadows on calcareous, peaty or clayey-silt-laden soils (Molinion caeruleae) 7230 Alkaline fens 8240 Limestone pavements 8330 Submerged or partially submerged sea caves	To maintain or restore the favourable conservation condition of the Qualifying Interests for which the SAC has been selected which are defined by the list of attributes and targets in the site-specific conservation objectives (NPWS (2015) Conservation Objectives: St. John's Point SAC 000191. Version 1. National Parks and Wildlife Service, Department of Arts, Heritage and the Gaeltacht), and in relevant supporting documentation.	Water quality/pollution (including groundwater); development of marinas and ports; disturbance of marine mammals; dumping at sea; direct loss of habitat to development; recreational/amenity use; agricultural improvements;/reclamation; agricultural abandonment; overgrazing/undergrazing; quarrying on esker ridges and limestone pavement; bracken & scrub development; drainage/changes in local hydrology; turf/peat extraction in fens; impacts of local geology/geomorphology (e.g. quarrying/rock blasting) for turloughs & groundwater fed fens. Introduction of alien invasive species

Site code	Site name	Qualifying interests	Conservation objectives	Threats to site integrity
				Illegal Dumping Quarrying/removal of sand Aquaculture
194	Tranarossan & Melmore Lough	1140 Mudflats and sandflats not covered by seawater at low tide 1210 Annual vegetation of drift lines 1220 Perennial vegetation of stony banks 1230 Vegetated sea cliffs of the Atlantic and Baltic coasts 1395 Petalwort <i>Petalophyllum ralfsii</i> 2110 Embryonic shifting dunes 2120 Shifting dunes along the shoreline with <i>Ammophila arenaria</i> (white dunes) 2130 Fixed coastal dunes with herbaceous vegetation (grey dunes) 2140 Decalcified fixed dunes with <i>Empetrum nigrum</i> 2170 Dunes with <i>Salix repens</i> ssp. <i>argentea</i> (Salicion arenariae) 21A0 Machairs (* in Ireland) 3140 Hard oligo-mesotrophic waters with benthic vegetation of <i>Chara</i> spp. 4030 European dry heaths 4060 Alpine and Boreal heaths	To maintain or restore the favourable conservation condition of the Qualifying Interests for which the SAC has been selected which are defined by the list of attributes and targets in the site-specific conservation objectives (NPWS (2015) Conservation Objectives: Tranarossan and Melmore Lough SAC 000194. Version 1. National Parks and Wildlife Service, Department of Arts, Heritage and the Gaeltacht), and in relevant supporting documentation.	Agricultural improvements/reclamation; drainage/changes in local hydrology including water abstraction; erosion (natural and anthropogenic); water quality/pollution; agricultural abandonment; overgrazing/undergrazing; direct loss of habitat to development; bracken & scrub encroachment; amenity/recreation use; tourism-related development. Introduction of alien invasive species Illegal Dumping Burning Quarrying/removal of sand
197	West of Ardara/Maas Road	1013 Geyer's Whorl Snail <i>Vertigo geyeri</i> 1029 Freshwater Pearl Mussel <i>Margaritifera margaritifera</i> 1065 Marsh Fritillary <i>Euphydryas aurinia</i> 1106 Salmon <i>Salmo salar</i> 1130 Estuaries	To maintain or restore the favourable conservation condition of the Qualifying Interests for which the SAC has been selected which are defined by the list of attributes and targets in the site-specific conservation objectives (NPWS (2015)	Agricultural improvements/reclamation; drainage /changes in local hydrology; water quality/pollution (including groundwater); agricultural abandonment; overgrazing/undergrazing; direct loss of habitat to development; bracken & scrub

Site code	Site name	Qualifying interests	Conservation objectives	Threats to site integrity
		<p>1140 Mudflats and sandflats not covered by seawater at low tide 1160 Large shallow inlets and bays 1330 Atlantic salt meadows (<i>Glauco-Puccinellietalia maritimae</i>) 1355 Otter <i>Lutra lutra</i> 1365 Harbour Seal <i>Phoca vitulina</i> 1395 Petalwort <i>Petalophyllum ralfsii</i> 1410 Mediterranean salt meadows (<i>Juncetalia maritimi</i>) 1833 Slender Naiad <i>Najas flexilis</i> 2120 Shifting dunes along the shoreline with <i>Ammophila arenaria</i> (white dunes) 2130 Fixed coastal dunes with herbaceous vegetation (grey dunes) 2140 Decalcified fixed dunes with <i>Empetrum nigrum</i> 2150 Atlantic decalcified fixed dunes (Calluno-Ulicetea) 2170 Dunes with <i>Salix repens</i> ssp. <i>argentea</i> (Salicion arenariae) 2190 Humid dune slacks 21A0 Machairs (* in Ireland) 3110 Oligotrophic waters containing very few minerals of sandy plains (<i>Littorelletalia uniflorae</i>) 4010 Northern Atlantic wet heaths with <i>Erica tetralix</i> 4030 European dry heaths 4060 Alpine and Boreal heaths 5130 -<i>Juniperus communis</i> formations</p>	<p>Conservation Objectives: West of Ardara/Maas Road SAC 000197. Version 1. National Parks and Wildlife Service, Department of Arts, Heritage and the Gaeltacht), and in relevant supporting documentation.</p>	<p>encroachment; turf/peat extraction in fens; impacts to local geology/geomorphology Introduction of alien invasive species Illegal Dumping Burning Increased pollution/reduction in water quality Persecution (Poisoning) Quarrying/removal of sand Aquaculture Potential threats to Freshwater Pearl Mussel</p>

Site code	Site name	Qualifying interests	Conservation objectives	Threats to site integrity
		<p>on heaths or calcareous grasslands</p> <p>6210 Semi-natural dry grasslands and scrubland facies on calcareous substrates (Festuco-Brometalia) (* important orchid sites)</p> <p>6410 <i>Molinia</i> meadows on calcareous, peaty or clayey-silt-laden soils (Molinion caeruleae)</p> <p>6510 Lowland hay meadows (Alopecures pratensis, Sanguisorba officinalis)</p> <p>7130 Blanket bogs (* if active bog)</p> <p>7150 Depressions on peat substrates of the Rhynchosporion</p> <p>7230 Alkaline fens</p>		
428	Lough Melvin	<p>3130 Oligotrophic to mesotrophic standing waters with vegetation of the Littorelletea uniflorae and/or of the Isoëto-Nanojuncetea;</p> <p>6410 <i>Molinia</i> meadows on calcareous, peaty or clayey-silt-laden soils (Molinion caeruleae)</p> <p>1106 Atlantic Salmon <i>Salmo salar</i>;</p> <p>1355 Otter <i>Lutra lutra</i>.</p>	<p>To maintain or restore the favourable conservation condition of the Annex I habitat(s) and/or the Annex II species for which the SAC has been selected (NPWS (2016) Conservation objectives for Lough Melvin SAC [000428]. Generic Version 5.0. Department of Arts, Heritage, Regional, Rural and Gaeltacht Affairs).</p>	<p>Agricultural improvements/reclamation; drainage/changes in local hydrology including water abstraction; erosion (natural and anthropogenic); water quality/pollution; agricultural abandonment; overgrazing/undergrazing; direct loss of habitat to development; bracken & scrub encroachment; amenity/recreation use; tourism-related development; peat extraction; forestry; burning; arterial drainage/water abstraction/lowering of the regional water table; agricultural reclamation.</p> <p>Introduction of alien invasive species</p> <p>Illegal Dumping</p> <p>Increased pollution/reduction in water quality</p>

Site code	Site name	Qualifying interests	Conservation objectives	Threats to site integrity
1090	Ballyness Bay	1013 Greyer's whorl Snail <i>Vertigo geyeri</i> 1130 Estuaries 1140 Mudflats and sandflats not covered by seawater at low tide 2110 Embryonic shifting dunes 2120 Shifting dunes along the shoreline with <i>Ammophila arenaria</i> (white dunes) 2130 Fixed coastal dunes with herbaceous vegetation (grey dunes) 2190 Humid dune slacks	To maintain or restore the favourable conservation condition of the Qualifying Interests for which the SAC has been selected which are defined by the list of attributes and targets in the site-specific conservation objectives (NPWS (2014) Conservation Objectives: Ballyness Bay SAC 001090. Version 1. National Parks and Wildlife Service, Department of Arts, Heritage and the Gaeltacht), and in relevant supporting documentation.	Water quality/pollution; development of marinas and ports; disturbance of marine mammals; dumping at sea; direct loss of habitat to development; recreational/amenity use; agricultural improvements/reclamation; drainage/changes in local hydrology including water abstraction; erosion (natural and anthropogenic); agricultural abandonment; overgrazing/undergrazing; bracken & scrub encroachment; amenity/recreation use; tourism-related development. Introduction of alien invasive species Illegal Dumping Burning Quarrying/removal of sand Aquaculture
1107	Coolvoy Bog	7130 Blanket bogs (*if active bog)	To maintain or restore the favourable conservation condition of the Annex I habitat(s) and/or the Annex II species for which the SAC has been selected (NPWS (2016) Conservation objectives for Coolvoy Bog SAC [001107]. Generic Version 5.0. Department of Arts, Heritage, Regional, Rural and Gaeltacht Affairs).	Changes in local hydrology including drainage; peat extraction; overgrazing; forestry; burning; direct loss of habitat to development; arterial drainage/water abstraction/lowering of the regional water table; agricultural reclamation. Introduction of alien invasive species Illegal Dumping
1125	Dunragh Loughs/ Pettigo Plateau	7130 Blanket bogs (*if active bog) 4010 Northern Atlantic wet heaths with <i>Erica tetralix</i>	To maintain or restore the favourable conservation condition of the Annex I habitat(s) and/or the Annex II species for which the SAC has been selected (NPWS (2016) Conservation objectives for Dunragh Loughs/Pettigo Plateau SAC [001125]. Generic Version 5.0. Department of Arts,	Changes in local hydrology including drainage; peat extraction; overgrazing; forestry; burning; direct loss of habitat to development; arterial drainage/water abstraction/lowering of the regional water table; agricultural reclamation. Introduction of alien invasive species

Site code	Site name	Qualifying interests	Conservation objectives	Threats to site integrity
			Heritage, Regional, Rural and Gaeltacht Affairs).	Illegal Dumping
1141	Gweedore Bay & Islands	1150 Coastal lagoons 1170 Reefs 1220 Perennial vegetation of stony banks 1355 Otter <i>Lutra lutra</i> 1395 Petalwort <i>Petalophyllum ralfsii</i> 1410 Mediterranean salt meadows (<i>Juncetalia maritimi</i>) 1833 Slender Naiad <i>Najas flexilis</i> 2110 Embryonic shifting dunes 2120 Shifting dunes along the shoreline with <i>Ammophila arenaria</i> (white dunes) 2130 Fixed coastal dunes with herbaceous vegetation (grey dunes)* 2140 Decalcified fixed dunes with <i>Empetrum nigrum</i> * 2150 Atlantic decalcified fixed dunes (<i>Calluno-Ulicetea</i>)* 2170 Dunes with <i>Salix repens</i> ssp. <i>argentea</i> (<i>Salicion arenariae</i>) 2190 Humid dune slacks 21A0 Machairs (* in Ireland) 3110 Oligotrophic waters containing very few minerals of sandy plains (<i>Littorelletalia uniflorae</i>) 4030 European dry heaths 4060 Alpine and Boreal heaths 5130 <i>Juniperus communis</i> formations on heaths or calcareous grasslands	To maintain or restore the favourable conservation condition of the Qualifying Interests for which the SAC has been selected which are defined by the list of attributes and targets in the site-specific conservation objectives (NPWS (2015) Conservation Objectives: Gweedore Bay and Islands SAC 001141. Version 1. National Parks and Wildlife Service, Department of Arts, Heritage and the Gaeltacht), and in relevant supporting documentation.	Agricultural improvements/reclamation; drainage/changes in local hydrology including water abstraction; erosion (natural and anthropogenic); water quality/pollution; agricultural abandonment; overgrazing/undergrazing; direct loss of habitat to development; bracken & scrub encroachment; amenity/recreation use; tourism-related development; peat extraction; forestry; burning; arterial drainage/water abstraction/lowering of the regional water table; agricultural reclamation. Introduction of alien invasive species Illegal Dumping Increased pollution/reduction in water quality Felling/Removal of Trees Quarrying/removal of sand Aquaculture

Site code	Site name	Qualifying interests	Conservation objectives	Threats to site integrity
1151	Kindrum Lough	3130 Oligotrophic to mesotrophic standing waters with vegetation of the Littorelletea uniflorae and/or Isoeto-Nanojuncetea 1833 Slender Naiad <i>Najas flexilis</i>	To maintain or restore the favourable conservation condition of the Annex I habitat(s) and/or the Annex II species for which the SAC has been selected (NPWS (2016) Conservation objectives for Kindrum Lough SAC [001151]. Generic Version 5.0. Department of Arts, Heritage, Regional, Rural and Gaeltacht Affairs).	Agricultural improvements/reclamation; drainage/changes in local hydrology including water abstraction; erosion (natural and anthropogenic); water quality/pollution; agricultural abandonment; overgrazing/undergrazing; direct loss of habitat to development; bracken & scrub encroachment; amenity/recreation use; tourism-related development; peat extraction; forestry; burning; arterial drainage/water abstraction/lowering of the regional water table; agricultural reclamation. Introduction of alien invasive species Illegal Dumping Increased pollution/reduction in water quality
1179	Muckish Mountain	4060 Alpine and Boreal heaths 8220 Siliceous rocky slopes with chasmophytic vegetation	To maintain or restore the favourable conservation condition of the Annex I habitat(s) and/or the Annex II species for which the SAC has been selected (NPWS (2016) Conservation objectives for Muckish Mountain SAC [001179]. Generic Version 5.0. Department of Arts, Heritage, Regional, Rural and Gaeltacht Affairs).	Changes in local hydrology including drainage; peat extraction; overgrazing; forestry; burning; direct loss of habitat to development; arterial drainage/water abstraction/lowering of the regional water table; agricultural reclamation. Introduction of alien invasive species Illegal Dumping Felling/Removal of Trees
1190	Sheephaven	1140 Mudflats and sandflats not covered by seawater at low tide 1330 Atlantic salt meadows (<i>Glauco-Puccinellietalia maritimae</i>) 1395 Petalwort <i>Petalophyllum ralfsii</i> 1410 Mediterranean salt meadows	To maintain or restore the favourable conservation condition of the Qualifying Interests for which the SAC has been selected which are defined by the list of attributes and targets in the site-specific conservation objectives (NPWS (2014)	Agricultural improvements/reclamation; drainage/changes in local hydrology including water abstraction; erosion (natural and anthropogenic); water quality/pollution; agricultural abandonment; overgrazing/undergrazing; direct loss of

Site code	Site name	Qualifying interests	Conservation objectives	Threats to site integrity
		(<i>Juncetalia maritimi</i>) 2120 Shifting dunes along the shoreline with <i>Ammophila arenaria</i> (white dunes) 2130 Fixed coastal dunes with herbaceous vegetation (grey dunes)* 21A0 Machairs (* in Ireland) 91A0 Old sessile oak woods with <i>Ilex</i> and <i>Blechnum</i> in the British Isles	Conservation Objectives: Sheephaven SAC 001190. Version 1. National Parks and Wildlife Service, Department of Arts, Heritage and the Gaeltacht), and in relevant supporting documentation.	habitat to development; bracken & scrub encroachment; amenity/recreation use; tourism-related development; invasive species; lack of/inappropriate woodland development; overgrazing (deer). Introduction of alien invasive species Illegal Dumping, Burning Felling/Removal of Trees Quarrying/removal of sand Aquaculture
1195	Termon Strand	1150 Coastal lagoons*	To maintain or restore the favourable conservation condition of the Qualifying Interests for which the SAC has been selected which are defined by the list of attributes and targets in the site-specific conservation objectives (NPWS (2016) Conservation Objectives: Termon Strand SAC 001195. Version 1. National Parks and Wildlife Service, Department of Arts, Heritage, Regional, Rural and Gaeltacht Affairs), and in relevant supporting documentation.	Agricultural improvements/reclamation; aquaculture, drainage/changes in local hydrology including water abstraction; erosion (natural and anthropogenic); water quality/pollution; agricultural abandonment; overgrazing/undergrazing; direct loss of habitat to development; bracken & scrub encroachment; amenity/recreation use; tourism-related development; peat extraction; forestry; burning; arterial drainage/water abstraction/lowering of the regional water table; agricultural reclamation. Introduction of alien invasive species Illegal Dumping Quarrying/removal of sand Aquaculture
1880	Meenaguse Scragh	4010 Northern Atlantic wet heaths with <i>Erica tetralix</i> .	To maintain or restore the favourable conservation condition of the Annex I habitat(s) and/or the Annex II species for which the SAC has been selected (NPWS	Agricultural improvements/reclamation; drainage/changes in local hydrology including water abstraction; erosion (natural and anthropogenic); water quality/pollution;

Site code	Site name	Qualifying interests	Conservation objectives	Threats to site integrity
			(2016) Conservation objectives for Meenaguse Scragh SAC [001880]. Generic Version 5.0. Department of Arts, Heritage, Regional, Rural and Gaeltacht Affairs).	agricultural abandonment; overgrazing/undergrazing; direct loss of habitat to development; bracken & scrub encroachment; amenity/recreation use; tourism-related development; peat extraction; forestry; burning; arterial drainage/water abstraction/lowering of the regional water table; agricultural reclamation. Introduction of alien invasive species Illegal Dumping
1975	Ballyhoorisky Point to Fanad Head	1220 Perennial vegetation of stony banks 1230 Vegetated sea cliffs of the Atlantic and Baltic coasts 3130 Oligotrophic to mesotrophic standing waters with vegetation of the Littorelletea uniflorae and/or Isoeto-Nanojuncetea 3140 Hard oligo-mesotrophic waters with benthic vegetation of <i>Chara</i> spp. 1014 Narrow-mouthed Whorl Snail <i>Vertigo angustior</i> 1833 Slender Naiad <i>Najas flexilis</i>	To maintain or restore the favourable conservation condition of the Annex I habitat(s) and/or the Annex II species for which the SAC has been selected (NPWS (2016) Conservation objectives for Ballyhoorisky Point to Fanad Head SAC [001975]. Generic Version 5.0. Department of Arts, Heritage, Regional, Rural and Gaeltacht Affairs).	Recreation and coastal defences; invasive species; erosion caused by sea defences and pathways; eutrophication and other activities linked to water pollution; hydrological change; peat-cutting and forestry on peatland; peatland drainage and general degradation; changes in grazing and wetland drainage; acidification and peatland damage.
1992	Tamur Bog	4010 Northern Atlantic wet heaths with <i>Erica tetralix</i> 7130 Blanket bogs (* if active bog) 7150 Depressions on peat substrates of the Rhynchosporion	To maintain or restore the favourable conservation condition of the Annex I habitat(s) and/or the Annex II species for which the SAC has been selected (NPWS (2016) Conservation objectives for Tamur Bog SAC [001992]. Generic Version 5.0. Department of Arts, Heritage, Regional, Rural and Gaeltacht Affairs).	Changes in local hydrology including drainage; peat extraction; overgrazing; forestry; burning; direct loss of habitat to development; arterial drainage/water abstraction/lowering of the regional water table; agricultural reclamation. Introduction of alien invasive species Illegal Dumping
2012	North Inishowen	1014 Narrow-mouthed Whorl Snail <i>Vertigo angustior</i>	To maintain or restore the favourable conservation condition of the Qualifying	Agricultural improvements/reclamation; drainage/changes in local hydrology including

Site code	Site name	Qualifying interests	Conservation objectives	Threats to site integrity
	Coast	1140 Mudflats and sandflats not covered by seawater at low tide 1220 Perennial vegetation of stony banks 1230 Vegetated sea cliffs of the Atlantic and Baltic coasts 1355 Otter <i>Lutra lutra</i> 2130 Fixed coastal dunes with herbaceous vegetation (grey dunes) 21A0 Machairs (* in Ireland) 4030 European dry heaths	Interests for which the SAC has been selected which are defined by the list of attributes and targets in the site-specific conservation objectives (NPWS (2014) Conservation Objectives: North Inishowen Coast SAC 002012. Version 1. National Parks and Wildlife Service, Department of Arts, Heritage and the Gaeltacht), and in relevant supporting documentation.	water abstraction; erosion (natural and anthropogenic); water quality/pollution; agricultural abandonment; overgrazing/undergrazing; direct loss of habitat to development; bracken & scrub encroachment; amenity/recreation use; tourism-related development. Introduction of alien invasive species Illegal Dumping Burning Quarrying/removal of sand Aquaculture
2047	Cloghernagore Bog & Glenveagh National Park	3110 Oligotrophic waters containing very few minerals of sandy plains (<i>Littorelletalia uniflorae</i>) 3260 Water courses of plain to montane levels with the <i>Ranunculion fluitantis</i> and <i>Callitriche-Batrachion</i> vegetation 4010 Northern Atlantic wet heaths with <i>Erica tetralix</i> 4030 European dry heaths 4060 Alpine and Boreal heaths 6410 <i>Molinia</i> meadows on calcareous, peaty or clayey-silt-laden soils (<i>Molinion caeruleae</i>) 7130 Blanket bogs (* if active bog) 7150 Depressions on peat substrates of the <i>Rhynchosporion</i> 91A0 Old sessile oak woods with <i>Ilex</i> and <i>Blechnum</i> in the British Isles * 1029 Freshwater Pearl Mussel	To maintain or restore the favourable conservation condition of the Annex I habitat(s) and/or the Annex II species for which the SAC has been selected (NPWS (2016) Conservation objectives for Cloghernagore Bog and Glenveagh National Park SAC [002047]. Generic Version 5.0. Department of Arts, Heritage, Regional, Rural and Gaeltacht Affairs).	Changes in local hydrology including drainage; peat extraction; overgrazing; forestry; burning; direct loss of habitat to development; arterial drainage/water abstraction/lowering of the regional water table; agricultural reclamation. Introduction of alien invasive species Illegal Dumping Increased pollution/reduction in water quality Felling/Removal of Trees Persecution (Poisoning) Potential threats to Freshwater Pearl Mussel

Site code	Site name	Qualifying interests	Conservation objectives	Threats to site integrity
		<p><i>Margaritifera margaritifera</i> 1106 Salmon <i>Salmo salar</i> 1355 Otter <i>Lutra lutra</i> 1421 Killarney Fern <i>Trichomanes speciosum</i></p>		
2135	Lough Nageage	1092 Freshwater White-clawed Crayfish <i>Autropotamobius pallipes</i>	To maintain or restore the favourable conservation condition of the Annex I habitat(s) and/or the Annex II species for which the SAC has been selected (NPWS (2016) Conservation objectives for Lough Nageage SAC [002135]. Generic Version 5.0. Department of Arts, Heritage, Regional, Rural and Gaeltacht Affairs).	<p>Disease introduction; Agricultural improvements/reclamation; drainage/changes in local hydrology including water abstraction; erosion (natural and anthropogenic); water quality/pollution; agricultural abandonment; overgrazing/undergrazing; direct loss of habitat to development; bracken & scrub encroachment; amenity/recreation use; tourism-related development. Introduction of alien invasive species Illegal Dumping Increased pollution/reduction in water quality Crayfish Fishing</p>
2159	Mulroy Bay	1160 Large shallow inlets and bays 1170 Reefs 1355 Otter <i>Lutra lutra</i>	To maintain or restore the favourable conservation condition of the Qualifying Interests for which the SAC has been selected which are defined by the list of attributes and targets in the site-specific conservation objectives (NPWS (2012) Conservation Objectives: Mulroy Bay SAC 002159. Version 1.0. National Parks and Wildlife Service, Department of Arts, Heritage and the Gaeltacht), and in relevant supporting documentation.	<p>Agricultural improvements/reclamation; aquaculture, drainage/changes in local hydrology including water abstraction; erosion (natural and anthropogenic); water quality/pollution; direct loss of habitat to development; bracken & scrub encroachment; amenity/recreation use; tourism-related development. Introduction of alien invasive species Illegal Dumping Crayfish Fishing Quarrying/removal of sand Aquaculture</p>

Site code	Site name	Qualifying interests	Conservation objectives	Threats to site integrity
2164	Lough Golagh & Breesy Hill	7130 Blanket bog (* if active bog).	To maintain or restore the favourable conservation condition of the Annex I habitat(s) and/or the Annex II species for which the SAC has been selected (NPWS (2016) Conservation objectives for Lough Golagh and Breesy Hill SAC [002164]. Generic Version 5.0. Department of Arts, Heritage, Regional, Rural and Gaeltacht Affairs).	Agricultural improvements/reclamation; drainage/changes in local hydrology including water abstraction; erosion (natural and anthropogenic); water quality/pollution; agricultural abandonment; overgrazing/undergrazing; direct loss of habitat to development; bracken & scrub encroachment; amenity/recreation use; tourism-related development. Introduction of alien invasive species Illegal Dumping
2176	Leannan River	3110 Oligotrophic waters containing very few minerals of sandy plains (Littorelletalia uniflorae) 3130 Oligotrophic to mesotrophic standing waters with vegetation of the Littorelletea uniflorae and/or Isoeto-Nanojuncetea 1029 Freshwater Pearl Mussel <i>Margaritifera margaritifera</i> 1106 Salmon <i>Salmo salar</i> 1355 Otter <i>Lutra lutra</i> 1833 Slender Naiad <i>Najas flexilis</i>	To maintain or restore the favourable conservation condition of the Annex I habitat(s) and/or the Annex II species for which the SAC has been selected (NPWS (2016) Conservation objectives for Leannan River SAC [002176]. Generic Version 5.0. Department of Arts, Heritage, Regional, Rural and Gaeltacht Affairs).	Changes in local hydrology including drainage; peat extraction; overgrazing; forestry; burning; direct loss of habitat to development; arterial drainage/water abstraction/lowering of the regional water table; agricultural reclamation, siltation. Introduction of alien invasive species Illegal Dumping Increased pollution/reduction in water quality Potential Threats to Freshwater Pearl Mussel
2259	Tory Island Coast	1150 Coastal lagoons 1170 Reefs 1220 Perennial vegetation of stony banks 1230 Vegetated sea cliffs of the Atlantic and Baltic coasts	To maintain or restore the favourable conservation condition of the Qualifying Interests for which the SAC has been selected which are defined by the list of attributes and targets in the site-specific conservation objectives (NPWS (2015) Conservation Objectives: Tory Island Coast SAC 002259. Version 1. National Parks and Wildlife Service, Department of Arts, Heritage and the	Agricultural improvements/reclamation; drainage/changes in local hydrology including water abstraction; erosion (natural and anthropogenic); water quality/pollution; agricultural abandonment; overgrazing/undergrazing; direct loss of habitat to development; bracken & scrub encroachment; amenity/recreation use; tourism-related development.

Site code	Site name	Qualifying interests	Conservation objectives	Threats to site integrity
			Gaeltacht), and in relevant supporting documentation.	Introduction of alien invasive species Illegal Dumping Quarrying/removal of sand Aquaculture
2283	Rutland Island & Sound	1150 Coastal lagoons* 1160 Large shallow inlets and bays 1170 Reefs 1210 Annual vegetation of drift lines 1365 Harbour seal <i>Phoca vitulina</i> 2110 Embryonic shifting dunes 2120 Shifting dunes along the shoreline with <i>Ammophila arenaria</i> (white dunes) 2130 Fixed coastal dunes with herbaceous vegetation (grey dunes)* 2190 Humid dune slacks	To maintain or restore the favourable conservation condition of the Qualifying Interests for which the SAC has been selected which are defined by the list of attributes and targets in the site-specific conservation objectives (NPWS (2013) Conservation Objectives: Rutland Island and Sound SAC 002283. Version 1. National Parks and Wildlife Service, Department of Arts, Heritage and the Gaeltacht), and in relevant supporting documentation.	Agricultural improvements/reclamation; drainage/changes in local hydrology including water abstraction; erosion (natural and anthropogenic); water quality/pollution; agricultural abandonment; overgrazing/undergrazing; direct loss of habitat to development; bracken & scrub encroachment; amenity/recreation use; tourism-related development. Introduction of alien invasive species; Illegal Dumping Burning; Quarrying/removal of sand Aquaculture
2287	Lough Swilly	1130 Estuaries 1150 * Coastal lagoons 1330 Atlantic salt meadows (<i>Glauco-Puccinellietalia maritima</i>) 1355 Otter <i>Lutra lutra</i> 91A0 Old sessile oak woods with <i>Ilex</i> and <i>Blechnum</i> in the British Isles	To maintain or restore the favourable conservation condition of the Qualifying Interests for which the SAC has been selected which are defined by the list of attributes and targets in the site-specific conservation objectives (NPWS (2011) Conservation Objectives: Lough Swilly SAC 002287 and Lough Swilly SPA 004075. Version 1.0. National Parks and Wildlife Service, Department of Arts, Heritage and the Gaeltacht), and in relevant supporting documentation.	Agricultural improvements/reclamation; drainage/changes in local hydrology including water abstraction; erosion (natural and anthropogenic); water quality/pollution; agricultural abandonment; overgrazing/undergrazing; direct loss of habitat to development; bracken & scrub encroachment; amenity/recreation use; tourism-related development. Introduction of alien invasive species Illegal Dumping; Burning; Felling/Removal of Trees; Quarrying/removal of sand; Aquaculture
2301	River Finn	3110 Oligotrophic waters containing very few minerals of sandy plains (<i>Littorelletalia</i>	To maintain or restore the favourable conservation condition of the Annex I	Water quality/ pollution (including groundwater), direct loss of habitat to

Site code	Site name	Qualifying interests	Conservation objectives	Threats to site integrity
		uniflorae) 4010 Northern Atlantic wet heaths with <i>Erica tetralix</i> 7130 Blanket bogs (* if active bog) 7140 Transition mires and quaking bogs 1106 Salmon <i>Salmo salar</i> 1355 Otter <i>Lutra lutra</i>	habitat(s) and/or the Annex II species for which the SAC has been selected (NPWS (2016) Conservation objectives for River Finn SAC [002301]. Generic Version 5.0. Department of Arts, Heritage, Regional, Rural and Gaeltacht Affairs).	development, invasive species, lack of woodland management. Introduction of alien invasive species Illegal Dumping Increased pollution/reduction in water quality Persecution (Poisoning)
2303	Dunmuckrum Turloughs	3180 Turloughs*	To maintain or restore the favourable conservation condition of the Annex I habitat(s) and/or the Annex II species for which the SAC has been selected (NPWS (2016) Conservation objectives for Dunmuckrum Turloughs SAC [002303]. Generic Version 5.0. Department of Arts, Heritage, Regional, Rural and Gaeltacht Affairs).	Agricultural improvements/reclamation; drainage/changes in local hydrology including water abstraction; erosion (natural and anthropogenic); water quality/pollution; agricultural abandonment; overgrazing/undergrazing; direct loss of habitat to development; bracken & scrub encroachment; amenity/recreation use; tourism-related development. Introduction of alien invasive species Illegal Dumping
2999	Hempton's Turbot Bank	1110 Sandbanks which are slightly covered by sea water all the time	To maintain or restore the favourable conservation condition of the Qualifying Interests for which the SAC has been selected which are defined by the list of attributes and targets in the site-specific conservation objectives (NPWS (2015) Conservation Objectives: Hempton's Turbot Bank SAC 002999. Version 1. National Parks and Wildlife Service, Department of Arts, Heritage and the Gaeltacht), and in relevant supporting documentation.	Erosion; pelagic trawling.

County Donegal: Special Protection Areas (SPAs)

Site code	Site name	Qualifying interests	Conservation objectives	Threats to site integrity
4034	Trawbreaga Bay	A045 Barnacle Goose <i>Branta leucopsis</i> A046 Brent Goose <i>Branta bernicla hrota</i> A346 Chough <i>Pyrrhocorax pyrrhocorax</i> A999 Wetlands	To maintain or restore the favourable conservation condition of the bird species listed as Special Conservation Interests for this SPA which are defined by the list of attributes and targets in the site-specific conservation objectives (NPWS (2014) Conservation Objectives: Trawbreaga Bay SPA 004034. Version 1. National Parks and Wildlife Service, Department of Arts, Heritage and the Gaeltacht), and in relevant supporting documentation.	Direct & indirect impacts to the habitats of the bird species of conservation interests (loss of habitat); direct loss of habitat to development; water quality/pollution; disturbance including recreation/amenity use. Introduction of alien invasive species Illegal Dumping Disturbance from Recreational/amenity use Inappropriate land management
4039	Glenveagh National Park (Derryveagh & Glendowan Mountains)	A001 Red-throated Diver <i>Gavia stellata</i> A098 Merlin <i>Falco columbarius</i> A103 Peregrine <i>Falco peregrinus</i> A140 Golden Plover <i>Pluvialis apricaria</i> A466 Dunlin <i>Calidris alpina schinzii</i>	To maintain or restore the favourable conservation condition of the bird species listed as Special Conservation Interests for this SPA (NPWS (2016) Conservation objectives for Derryveagh and Glendowan Mountains SPA [004039]. Generic Version 5.0. Department of Arts, Heritage, Regional, Rural and Gaeltacht Affairs).	Direct & indirect impacts to the habitats of the bird species of conservation interests (loss of habitat); direct loss of habitat to development; water quality/pollution; disturbance including recreation/amenity use. Introduction of alien invasive species Illegal Dumping Persecution (Poisoning) Disturbance from Recreational/amenity use Inappropriate land management

Site code	Site name	Qualifying interests	Conservation objectives	Threats to site integrity
4057	Lough Derg (Donegal)	A183 Lesser Black-backed Gull <i>Larus fuscus</i> A184 Herring Gull <i>Larus argentatus</i>	To maintain or restore the favourable conservation condition of the bird species listed as Special Conservation Interests for this SPA (NPWS (2016) Conservation objectives for Lough Derg (Donegal) SPA [004057]. Generic Version 5.0. Department of Arts, Heritage, Regional, Rural and Gaeltacht Affairs).	Direct & indirect impacts to the habitats of the bird species of conservation interests (loss of habitat); direct loss of habitat to development; water quality/pollution; disturbance including recreation/amenity use. Introduction of alien invasive species Illegal Dumping Disturbance from Recreational/amenity use Inappropriate land management
4060	Lough Fern	A059 Pochard <i>Aythya ferina</i>	To maintain or restore the favourable conservation condition of the bird species listed as Special Conservation Interests for this SPA (NPWS (2016) Conservation objectives for Lough Fern SPA [004060]. Generic Version 5.0. Department of Arts, Heritage, Regional, Rural and Gaeltacht Affairs).	Direct & indirect impacts to the habitats of the bird species of conservation interests (loss of habitat); direct loss of habitat to development; water quality/pollution; disturbance including recreation/amenity use. Introduction of alien invasive species Illegal Dumping Disturbance from Recreational/amenity use Inappropriate land management

Site code	Site name	Qualifying interests	Conservation objectives	Threats to site integrity
4073	Tory Island	A009 Fulmar <i>Fulmarus glacialis</i> A122 Corncrake <i>Crex crex</i> A200 Razorbill <i>Alca torda</i> A204 Puffin <i>Fratercula arctica</i>	To maintain or restore the favourable conservation condition of the bird species listed as Special Conservation Interests for this SPA (NPWS (2016) Conservation objectives for Tory Island SPA [004073]. Generic Version 5.0. Department of Arts, Heritage, Regional, Rural and Gaeltacht Affairs).	Direct & indirect impacts to the habitats of the bird species of conservation interests (loss of habitat); direct loss of habitat to development; water quality/pollution; disturbance including recreation/amenity use. Introduction of alien invasive species Illegal Dumping Disturbance from Recreational/amenity use Inappropriate land management

Site code	Site name	Qualifying interests	Conservation objectives	Threats to site integrity
4075	Lough Swilly	<p>A005 Great Crested Grebe <i>Podiceps cristatus</i></p> <p>A028 Grey Heron <i>Ardea cinerea</i></p> <p>A038 Whooper Swan <i>Cygnus cygnus</i></p> <p>A043 Greylag Goose <i>Anser anser</i></p> <p>A048 Shelduck <i>Tadorna tadorna</i></p> <p>A050 Wigeon <i>Anas penelope</i></p> <p>A052 Teal <i>Anas crecca</i></p> <p>A053 Mallard <i>Anas platyrhynchos</i></p> <p>A056 Shoveler <i>Anas clypeata</i></p> <p>A062 Scaup <i>Aythya marila</i></p> <p>A067 Goldeneye <i>Bucephala clangula</i></p> <p>A069 Red-breasted Merganser <i>Mergus serrator</i></p> <p>A125 Coot <i>Fulica atra</i></p> <p>A130 Oystercatcher <i>Haematopus ostralegus</i></p> <p>A143 Knot <i>Calidris canutus</i></p> <p>A149 Dunlin <i>Calidris alpina</i></p> <p>A160 Curlew <i>Numenius arquata</i></p> <p>A162 Redshank <i>Tringa totanus</i></p> <p>A164 Greenshank <i>Tringa nebularia</i></p> <p>A179 Black-headed Gull <i>Chroicocephalus ridibundus</i></p> <p>A182 Common Gull <i>Larus canus</i></p>	<p>To maintain or restore the favourable conservation condition of the bird species listed as Special Conservation Interests for this SPA which are defined by the list of attributes and targets in the site-specific conservation objectives (NPWS (2011) Conservation Objectives: Lough Swilly SAC 002287 and Lough Swilly SPA 004075. Version 1.0. National Parks and Wildlife Service, Department of Arts, Heritage and the Gaeltacht), and in relevant supporting documentation.</p>	<p>Direct & indirect impacts to the habitats of the bird species of conservation interests (loss of habitat); direct loss of habitat to development; water quality/pollution; disturbance including recreation/amenity use.</p> <p>Introduction of alien invasive species</p> <p>Illegal Dumping</p> <p>Inappropriate land management</p> <p>Disturbance from Recreational/amenity use</p>
46		<p>A191 Sandwich Tern <i>Sterna sandvicensis</i></p> <p>A193 Common Tern <i>Sterna hirundo</i></p>		

Site code	Site name	Qualifying interests	Conservation objectives	Threats to site integrity
4082	Greers Isle	A179 Black-headed Gull <i>Chroicocephalus ridibundus</i> A182 Common Gull <i>Larus canus</i> A191 Sandwich Tern <i>Sterna sandvicensis</i>	To maintain or restore the favourable conservation condition of the bird species listed as Special Conservation Interests for this SPA (NPWS (2016) Conservation objectives for Greers Isle SPA [004082]. Generic Version 5.0. Department of Arts, Heritage, Regional, Rural and Gaeltacht Affairs).	Direct & indirect impacts to the habitats of the bird species of conservation interests (loss of habitat); direct loss of habitat to development; water quality/pollution; disturbance including recreation/amenity use. Introduction of alien invasive species Illegal Dumping Disturbance from Recreational/amenity use Inappropriate land management
4083	Inishbofin, Inishdoeey & Inishbeg	A045 Barnacle Goose <i>Branta leucopsis</i> A122 Corncrake <i>Crex crex</i> A182 Common Gull <i>Larus canus</i> A183 Lesser Black-backed Gull <i>Larus fuscus</i> A194 Arctic Tern <i>Sterna paradisaea</i>	To maintain or restore the favourable conservation condition of the bird species listed as Special Conservation Interests for this SPA (NPWS (2016) Conservation objectives for Inishbofin, Inishdoeey and Inishbeg SPA [004083]. Generic Version 5.0. Department of Arts, Heritage, Regional, Rural and Gaeltacht Affairs).	Direct & indirect impacts to the habitats of the bird species of conservation interests (loss of habitat); direct loss of habitat to development; water quality/pollution; disturbance including recreation/amenity use. Introduction of alien invasive species Illegal Dumping Disturbance from Recreational/amenity use Inappropriate land management
4087	Lough Foyle	A001 Red-throated Diver <i>Gavia stellata</i> A005 Great Crested Grebe <i>Podiceps cristatus</i> A037 Bewick's Swan <i>Cygnus columbianus bewickii</i> A038 Whooper Swan <i>Cygnus cygnus</i>	To maintain or restore the favourable conservation condition of the bird species listed as Special Conservation Interests for this SPA which are defined by the list of attributes and targets in the site-specific conservation objectives (NPWS	Direct & indirect impacts to the habitats of the bird species of conservation interests (loss of habitat); direct loss of habitat to development; water quality/pollution; disturbance including recreation/amenity use. Introduction of alien invasive species

Site code	Site name	Qualifying interests	Conservation objectives	Threats to site integrity
		<p>A043 Greylag Goose <i>Anser anser</i> A046 Light-bellied Brent Goose <i>Branta bernicla hrota</i> A048 Shelduck <i>Tadorna tadorna</i> A050 Wigeon <i>Anas penelope</i> A052 Teal <i>Anas crecca</i> A053 Mallard <i>Anas platyrhynchos</i> A063 Eider <i>Somateria mollissima</i> A069 Red-breasted Merganser <i>Mergus serrator</i> A130 Oystercatcher <i>Haematopus ostralegus</i> A140 Golden Plover <i>Pluvialis apricaria</i> A142 Lapwing <i>Vanellus vanellus</i> A143 Knot <i>Calidris canutus</i> A149 Dunlin <i>Calidris alpina alpina</i> A157 Bar-tailed Godwit <i>Limosa lapponica</i> A160 Curlew <i>Numenius arquata</i> A162 Redshank <i>Tringa totanus</i> A179 Black-headed Gull <i>Chroicocephalus ridibundus</i></p>	<p>(2014) Conservation Objectives: Lough Foyle SPA 004087. Version 1. National Parks and Wildlife Service, Department of Arts, Heritage and the Gaeltacht), and in relevant supporting documentation.</p>	<p>Illegal Dumping Disturbance from Recreational/amenity use Inappropriate land management</p>

Site code	Site name	Qualifying interests	Conservation objectives	Threats to site integrity
		A182 Common Gull <i>Larus canus</i> A184 Herring Gull <i>Larus argentatus</i> A999 Wetland and Waterbirds		
4090	Sheskinmore Lough	A395 Greenland White-fronted Goose <i>Anser albifrons flavirostris</i>	To maintain or restore the favourable conservation condition of the bird species listed as Special Conservation Interests for this SPA (NPWS (2016) Conservation objectives for Sheskinmore Lough SPA [004090]. Generic Version 5.0. Department of Arts, Heritage, Regional, Rural and Gaeltacht Affairs).	Direct & indirect impacts to the habitats of the bird species of conservation interests (loss of habitat); direct loss of habitat to development; water quality/pollution; disturbance including recreation/amenity use. Introduction of alien invasive species Illegal Dumping Disturbance from Recreational/amenity use Inappropriate land management
4099	Pettigo Plateau Nature Reserve	A395 Greenland White-fronted Goose <i>Anser albifrons flavirostris</i>	To maintain or restore the favourable conservation condition of the bird species listed as Special Conservation Interests for this SPA (NPWS (2016) Conservation objectives for Pettigo Plateau Nature Reserve SPA [004099]. Generic Version 5.0. Department of Arts, Heritage, Regional, Rural and Gaeltacht Affairs).	Direct & indirect impacts to the habitats of the bird species of conservation interests (loss of habitat); direct loss of habitat to development; water quality/pollution; disturbance including recreation/amenity use. Introduction of alien invasive species Illegal Dumping Disturbance from Recreational/amenity use Inappropriate land management

Site code	Site name	Qualifying interests	Conservation objectives	Threats to site integrity
4100	Inishtrahull	A018 Shag <i>Phalacrocorax aristotelis</i> A045 Barnacle Goose <i>Branta leucopsis</i> A182 Common Gull <i>Larus canus</i>	To maintain or restore the favourable conservation condition of the bird species listed as Special Conservation Interests for this SPA (NPWS (2016) Conservation objectives for Inishtrahull SPA [004100]. Generic Version 5.0. Department of Arts, Heritage, Regional, Rural and Gaeltacht Affairs).	Direct & indirect impacts to the habitats of the bird species of conservation interests (loss of habitat); direct loss of habitat to development; water quality/pollution; disturbance including recreation/amenity use. Introduction of alien invasive species Illegal Dumping Disturbance from Recreational/amenity use Inappropriate land management
4110	Lough Nillan Bog	A098 Merlin <i>Falco columbarius</i> A140 Golden Plover <i>Pluvialis apricaria</i> A395 Greenland White-fronted Goose <i>Anser albifrons flavirostris</i> A466 Dunlin <i>Calidris alpina schinzii</i>	To maintain or restore the favourable conservation condition of the bird species listed as Special Conservation Interests for this SPA (NPWS (2016) Conservation objectives for Lough Nillan Bog SPA [004110]. Generic Version 5.0. Department of Arts, Heritage, Regional, Rural and Gaeltacht Affairs).	Direct & indirect impacts to the habitats of the bird species of conservation interests (loss of habitat); direct loss of habitat to development; water quality/pollution; disturbance including recreation/amenity use. Introduction of alien invasive species Illegal Dumping Disturbance from Recreational/amenity use Inappropriate land management

Site code	Site name	Qualifying interests	Conservation objectives	Threats to site integrity
4115	Inishduff	A018 Shag <i>Phalacrocorax aristotelis</i>	To maintain or restore the favourable conservation condition of the bird species listed as Special Conservation Interests for this SPA (NPWS (2016) Conservation objectives for Inishduff SPA [004115]. Generic Version 5.0. Department of Arts, Heritage, Regional, Rural and Gaeltacht Affairs).	Direct & indirect impacts to the habitats of the bird species of conservation interests (loss of habitat); direct loss of habitat to development; water quality/pollution; disturbance including recreation/amenity use. Introduction of alien invasive species Illegal Dumping Disturbance from Recreational/amenity use Inappropriate land management
4116	Inishkeel	A045 Barnacle Goose <i>Branta leucopsis</i>	To maintain or restore the favourable conservation condition of the bird species listed as Special Conservation Interests for this SPA (NPWS (2016) Conservation objectives for Inishkeel SPA [004116]. Generic Version 5.0. Department of Arts, Heritage, Regional, Rural and Gaeltacht Affairs).	Direct & indirect impacts to the habitats of the bird species of conservation interests (loss of habitat); direct loss of habitat to development; water quality/pollution; disturbance including recreation/amenity use. Introduction of alien invasive species Illegal Dumping Disturbance from Recreational/amenity use Inappropriate land management

Site code	Site name	Qualifying interests	Conservation objectives	Threats to site integrity
4120	Rathlin O'Birne Island	A045 Barnacle Goose <i>Branta leucopsis</i>	To maintain or restore the favourable conservation condition of the bird species listed as Special Conservation Interests for this SPA (NPWS (2016) Conservation objectives for Rathlin O'Birne Island SPA [004120]. Generic Version 5.0. Department of Arts, Heritage, Regional, Rural and Gaeltacht Affairs).	Direct & indirect impacts to the habitats of the bird species of conservation interests (loss of habitat); direct loss of habitat to development; water quality/pollution; disturbance including recreation/amenity use. Introduction of alien invasive species Illegal Dumping Disturbance from Recreational/ amenity use Inappropriate land management
4121	Roaninish	A045 Barnacle Goose <i>Branta leucopsis</i> A184 Herring Gull <i>Larus argentatus</i>	To maintain or restore the favourable conservation condition of the bird species listed as Special Conservation Interests for this SPA (NPWS (2016) Conservation objectives for Roaninish SPA [004121]. Generic Version 5.0. Department of Arts, Heritage, Regional, Rural and Gaeltacht Affairs).	Direct & indirect impacts to the habitats of the bird species of conservation interests (loss of habitat); direct loss of habitat to development; water quality/pollution; disturbance including recreation/amenity use. Introduction of alien invasive species Illegal Dumping Disturbance from Recreational/amenity use Inappropriate land management

Site code	Site name	Qualifying interests	Conservation objectives	Threats to site integrity
4132	Illancrone & Inishkeeragh	A045 Barnacle Goose <i>Branta leucopsis</i> A193 Common Tern <i>Sterna hirundo</i> A194 Arctic Tern <i>Sterna paradisaea</i> A195 Little Tern <i>Sterna albifrons</i>	To maintain or restore the favourable conservation condition of the bird species listed as Special Conservation Interests for this SPA (NPWS (2016) Conservation objectives for Illancrone and Inishkeeragh SPA [004132]. Generic Version 5.0. Department of Arts, Heritage, Regional, Rural and Gaeltacht Affairs).	Direct & indirect impacts to the habitats of the bird species of conservation interests (loss of habitat); direct loss of habitat to development; water quality/pollution; disturbance including recreation/amenity use. Introduction of alien invasive species Illegal Dumping Disturbance from Recreational/amenity use Inappropriate land management
4145	Durnesh Lough	A038 Whooper Swan <i>Cygnus cygnus</i> A395 Greenland White-fronted Goose <i>Anser albifrons flavirostris</i>	To maintain or restore the favourable conservation condition of the bird species listed as Special Conservation Interests for this SPA (NPWS (2016) Conservation objectives for Durnesh Lough SPA [004145]. Generic Version 5.0. Department of Arts, Heritage, Regional, Rural and Gaeltacht Affairs).	Fertilisation; natural eutrophication; grazing; human intrusions and disturbance; discharges.

Site code	Site name	Qualifying interests	Conservation objectives	Threats to site integrity
4146	Malin Head	A122 Corncrake <i>Crex crex</i>	To maintain or restore the favourable conservation condition of the bird species listed as Special Conservation Interests for this SPA (NPWS (2016) Conservation objectives for Malin Head SPA [004146]. Generic Version 5.0. Department of Arts, Heritage, Regional, Rural and Gaeltacht Affairs).	Cultivation; mowing/cutting grassland; grazing Discontinuous urbanisation.
4148	Fanad Head	A122 Corncrake <i>Crex crex</i>	To maintain or restore the favourable conservation condition of the bird species listed as Special Conservation Interests for this SPA (NPWS (2016) Conservation objectives for Fanad Head SPA [004148]. Generic Version 5.0. Department of Arts, Heritage, Regional, Rural and Gaeltacht Affairs).	Mowing/cutting grassland; grazing Discontinuous urbanisation.

Site code	Site name	Qualifying interests	Conservation objectives	Threats to site integrity
4149	Falcarragh to Meenlaragh	A122 Corncrake <i>Crex crex</i>	To maintain or restore the favourable conservation condition of the bird species listed as Special Conservation Interests for this SPA (NPWS (2016) Conservation objectives for Falcarragh to Meenlaragh SPA [004149]. Generic Version 5.0. Department of Arts, Heritage, Regional, Rural and Gaeltacht Affairs).	Cultivation; mowing/cutting grassland; grazing Discontinuous urbanisation.
4150	West Donegal Coast	A009 Fulmar <i>Fulmarus glacialis</i> A017 Cormorant Phalacrocorax carbo A018 Shag <i>Phalacrocorax aristotelis</i> A103 Peregrine <i>Falco peregrinus</i> A184 Herring Gull <i>Larus argentatus</i> A188 Kittiwake <i>Rissa tridactyla</i> A200 Razorbill <i>Alca torda</i> A346 Chough <i>Pyrrhocorax pyrrhocorax</i>	To maintain or restore the favourable conservation condition of the bird species listed as Special Conservation Interests for this SPA (NPWS (2016) Conservation objectives for West Donegal Coast SPA [004150]. Generic Version 5.0. Department of Arts, Heritage, Regional, Rural and Gaeltacht Affairs).	Direct & indirect impacts to the habitats of the bird species of conservation interests (loss of habitat); direct loss of habitat to development; water quality/pollution; disturbance including recreation/amenity use. Introduction of alien invasive species Illegal Dumping Disturbance from Recreational/amenity use Inappropriate land management

Site code	Site name	Qualifying interests	Conservation objectives	Threats to site integrity
4151	Donegal Bay	A003 Great Northern Diver <i>Gavia immer</i> wintering A046 Light-bellied Brent Goose <i>Branta bernicla hrota</i> wintering A065 Common Scoter <i>Melanitta nigra</i> wintering A144 Sanderling <i>Calidris alba</i> wintering A999 Wetland and Waterbirds	To maintain or restore the favourable conservation condition of the bird species listed as Special Conservation Interests for this SPA which are defined by the list of attributes and targets in the site-specific conservation objectives (NPWS (2012) Conservation Objectives: Donegal Bay SPA 004151. Version 1.0. National Parks and Wildlife Service, Department of Arts, Heritage and the Gaeltacht), and in relevant supporting documentation.	Direct & indirect impacts to the habitats of the bird species of conservation interests (loss of habitat); direct loss of habitat to development; water quality/pollution; disturbance including recreation/amenity use. Introduction of alien invasive species Illegal Dumping Disturbance from Recreational/amenity use Inappropriate land management
4194	Horn Head to Fanad Head	A009 Fulmar <i>Fulmarus glacialis</i> A017 Cormorant Phalacrocorax carbo A018 Shag <i>Phalacrocorax aristotelis</i> A045 Barnacle Goose <i>Branta leucopsis</i> A103 Peregrine <i>Falco peregrinus</i> A188 Kittiwake <i>Rissa tridactyla</i> A199 Guillemot <i>Uria aalge</i> A200 Razorbill <i>Alca torda</i>	To maintain or restore the favourable conservation condition of the bird species listed as Special Conservation Interests for this SPA (NPWS (2016) Conservation objectives for Horn Head to Fanad Head SPA [004194]. Generic Version 5.0. Department of Arts, Heritage, Regional, Rural and Gaeltacht Affairs).	Direct & indirect impacts to the habitats of the bird species of conservation interests (loss of habitat); direct loss of habitat to development; water quality/pollution; disturbance including recreation/amenity use. Introduction of alien invasive species Illegal Dumping Disturbance from Recreational/amenity use Inappropriate land management

Site code	Site name	Qualifying interests	Conservation objectives	Threats to site integrity
4230	West Donegal Islands	A018 Shag <i>Phalacrocorax aristotelis</i> A045 Barnacle Goose <i>Branta leucopsis</i> A122 Corncrake <i>Crex crex</i> A182 Common Gull <i>Larus canus</i> A184 Herring Gull <i>Larus argentatus</i>	To maintain or restore the favourable conservation condition of the bird species listed as Special Conservation Interests for this SPA (NPWS (2016) Conservation objectives for West Donegal Islands SPA [004230]. Generic Version 5.0. Department of Arts, Heritage, Regional, Rural and Gaeltacht Affairs).	Antagonism arising from introduction of species.

Northern Ireland SACs within 15km of County Donegal

Site code	Site name	Qualifying interests	Conservation objectives	Threats to site integrity
UK0030089	Binevenagh	8210 Calcareous rocky slopes with chasmophytic vegetation 6230 Species-rich <i>Nardus</i> grassland, on siliceous substrates in mountain areas (and submountain areas in continental Europe) 8120 Calcareous and calcshist screes of the montane to alpine levels (<i>Thlaspietea rotundifolii</i>)	To maintain the Annex I habitats for which the SAC has been selected at favourable conservation status	Changes in local hydrology, peat extraction, overgrazing, forestry, burning, direct loss of habitat to development, arterial drainage/ water abstraction/ lowering of the regional water table, agricultural reclamation. Introduction of alien invasive species Illegal Dumping Persecution (Poisoning)
UK0030084	Bann Estuary	1330 Atlantic salt meadows (<i>Glauco-Puccinellietalia maritima</i>) 2110 Embryonic shifting dunes 2120 "Shifting dunes along the shoreline with <i>Ammophila arenaria</i> ("white dunes")"	To maintain the Annex I habitats for which the SAC has been selected at favourable conservation status	Grazing Outdoor sports and leisure activities, recreational activities Air pollution, air-borne pollutants Invasive non-native species, Problematic native species Fire and fire suppression Human induced changes in hydraulic conditions Biocenotic evolution, succession Changes in abiotic conditions
UK0016613	Magilligan	2130 Fixed coastal dunes with herbaceous vegetation (`grey dunes`) 2170 Dunes with <i>Salix repens</i> ssp. <i>argentea</i> (<i>Salicion arenariae</i>) 2190 Humid dune slacks	To maintain the Annex I habitats for which the SAC has been selected at favourable conservation status; grey dunes, dunes with <i>Salix repens</i> ssp. <i>argentea</i> , humid dune slacks, embryonic shifting	Agricultural improvements/reclamation; drainage/changes in local hydrology including water abstraction; erosion (natural and anthropogenic); water quality/pollution; agricultural abandonment; overgrazing/undergrazing; direct loss of habitat to development; bracken & scrub encroachment; amenity/recreation use; tourism-related

Site code	Site name	Qualifying interests	Conservation objectives	Threats to site integrity
		2110 Embryonic shifting dunes 2120 Shifting dunes along the shoreline with <i>Ammophila arenaria</i> (` white dunes `) 1065 Marsh fritillary butterfly <i>Euphydryas aurinia</i> 1395 Petalwort Petalophyllum ralfsii	dunes, shifting dunes; To maintain the Annex II species for which the SAC has been selected at favourable conservation status; Marsh fritillary butterfly, Petalwort.	development; peat extraction; forestry; burning; arterial drainage/water abstraction/lowering of the regional water table; agricultural reclamation. Introduction of alien invasive species Illegal Dumping, Burning Quarrying/removal of sand, Aquaculture
UK0030360	River Roe and Tributaries	3260 Water courses of plain to montane levels with the <i>Ranunculion fluitantis</i> and <i>Callitriche-Batrachion</i> vegetation 91A0 Old sessile oak woods with <i>Ilex</i> and <i>Blechnum</i> in the British Isles 1106 Atlantic salmon <i>Salmo salar</i> 1355 Otter <i>Lutra lutra</i>	To maintain the Annex I habitats for which the cSAC has been selected at favourable conservation status; Water courses of plain to montane levels, Old sessile oak woods; To maintain the Annex II species for which the SAC has been selected at favourable conservation status; Atlantic salmon, Otter	Loss of fringe vegetation Changes in seasonal water levels/fluctuations Direct loss of habitat to development Loading from effluents (WWTP) Recreation/Amenity Use Developments - marinas, fishing Introduction of alien invasive species Illegal Dumping Water quality/pollution Changes in flow rates Arterial drainage/water abstraction/ lowering of the regional water table Siltation

Site code	Site name	Qualifying interests	Conservation objectives	Threats to site integrity
UK0030361	River Faughan and Tributaries	91A0 Old sessile oak woods with <i>Ilex</i> and <i>Blechnum</i> in the British Isles 1106 Atlantic salmon <i>Salmo salar</i> 1355 Otter <i>Lutra lutra</i>	To maintain the Annex I habitats for which the cSAC has been selected at favourable conservation status; Old sessile oak woods; To maintain the Annex II species for which the SAC has been selected at favourable conservation status; Atlantic salmon, Otter	Water quality/pollution Changes in flow rates Arterial drainage/water abstraction/ lowering of the regional water table Siltation Loss of fringe vegetation Changes in seasonal water levels/fluctuations Direct loss of habitat to development Loading from effluents (WWTP) Recreation/Amenity Use Developments - marinas, fishing Introduction of alien invasive species Illegal Dumping Felling/Removal of Trees
UK0030320	River Foyle and Tributaries	3260 Water courses of plain to montane levels with the <i>Ranunculion fluitantis</i> and <i>Callitriche-Batrachion</i> vegetation 1106 Atlantic salmon <i>Salmo salar</i> 1355 Otter <i>Lutra lutra</i>	To maintain the Annex I habitats for which the SAC has been selected at favourable conservation status; Water courses of plain to montane levels; To maintain the Annex II species for which the cSAC has been selected at favourable conservation status; Atlantic salmon, Otter	Water quality/pollution Changes in flow rates Arterial drainage/water abstraction/ lowering of the regional water table Siltation Loss of fringe vegetation Changes in seasonal water levels/fluctuations Direct loss of habitat to development Loading from effluents (WWTP) Recreation/Amenity Use Developments - marinas, fishing Introduction of alien invasive species Illegal Dumping

Site code	Site name	Qualifying interests	Conservation objectives	Threats to site integrity
UK0030383	Skerries and Causeway	1110 Sandbanks which are slightly covered by sea water all the time 1170 Reefs 8330 Submerged or partially submerged sea caves 1351 Harbour Porpoise <i>Phocoena phocoena</i>	To maintain the Annex I habitats for which the SAC has been selected at favourable conservation status; Sandbanks which are covered by sea water all the time; Reefs; Submerged or partially submerged sea caves. To maintain the Annex II species for which the cSAC has been selected at favourable conservation status; Harbour Porpoise	Pollution to surface waters / marine water pollution Exploitation and extraction of oil or gas Renewable abiotic energy use Outdoor sports and leisure activities Shipping lanes, ports and marine constructions Fishing and harvesting aquatic resources Changes in abiotic conditions Invasive non-native species
UK0016611	Fairy Water Bogs	7110 Active raised bogs	To maintain the Annex I habitats for which the SAC has been selected at favourable conservation status; Active raised bogs.	Changes in local hydrology, peat extraction, overgrazing, forestry, burning, direct loss of habitat to development, arterial drainage/ water abstraction/ lowering of the regional water table, agricultural reclamation. Introduction of alien invasive species Illegal Dumping

Site code	Site name	Qualifying interests	Conservation objectives	Threats to site integrity
UK0030233	Owenkillew River	3260 Water courses of plain to montane levels with the <i>Ranunculus fluitans</i> and <i>Callitriche-Batrachion</i> vegetation 91A0 Old sessile oak woods with <i>Ilex</i> and <i>Blechnum</i> in the British Isles 91D0 Bog woodland 1029 Freshwater pearl mussel <i>Margaritifera margaritifera</i> 1106 Atlantic salmon <i>Salmo salar</i> 1355 Otter <i>Lutra lutra</i>	To maintain the Annex I habitats for which the SAC has been selected at favourable conservation status; Water courses of plain to montane levels, Old sessile oak woods, Bog woodland; To maintain the Annex II species for which the cSAC has been selected at favourable conservation status; Atlantic salmon, Otter, Freshwater pearl mussel	Water quality/pollution Changes in flow rates Arterial drainage/water abstraction/ lowering of the regional water table Siltation Loss of fringe vegetation Changes in seasonal water levels/fluctuations Direct loss of habitat to development Loading from effluents (WWTP) Recreation/Amenity Use Developments - marinas, fishing Introduction of alien invasive species Illegal Dumping
UK0030211	Moneygal Bog	7110 Active raised bogs	To maintain the Annex I habitats for which the SAC has been selected at favourable conservation status; Active raised bogs	Changes in local hydrology, peat extraction, overgrazing, forestry, burning, direct loss of habitat to development, arterial drainage/ water abstraction/ lowering of the regional water table, agricultural reclamation. Introduction of alien invasive species Illegal Dumping
UK0030325	Tonnagh Beg Bog	7110 Active raised bogs	To maintain the Annex I habitats for which the SAC has been selected at favourable conservation status; Active raised bogs	Changes in local hydrology, peat extraction, overgrazing, forestry, burning, direct loss of habitat to development, arterial drainage/ water abstraction/ lowering of the regional water table, agricultural reclamation. Introduction of alien invasive species Illegal Dumping

Site code	Site name	Qualifying interests	Conservation objectives	Threats to site integrity
UK0030321	Cranny Bogs	7110 Active raised bogs	To maintain the Annex I habitats for which the SAC has been selected at favourable conservation status; Active raised bogs	Changes in local hydrology, peat extraction, overgrazing, forestry, burning, direct loss of habitat to development, arterial drainage/ water abstraction/ lowering of the regional water table, agricultural reclamation. Introduction of alien invasive species Illegal Dumping
UK0030326	Tully Bog	7110 Active raised bogs 7120 Degraded raised bogs still capable of natural regeneration	To maintain the Annex I habitats for which the SAC has been selected at favourable conservation status; Active raised bogs; Degraded raised bogs capable of natural regeneration	Biocenotic evolution, succession Fire and fire suppression Human induced changes in hydraulic conditions Air pollution, air-borne pollutants
UK0030047	Lough Melvin	3130 Oligotrophic to mesotrophic standing waters with vegetation of the Littorelletea uniflorae and/or of the Isoëto-Nanojuncetea 6410 <i>Molinia</i> meadows on calcareous, peaty or clayey-silt-laden soils (Molinion caeruleae) 91A0 Old sessile oak woods with <i>Ilex</i> and <i>Blechnum</i> in the British Isles 1106 Atlantic salmon <i>Salmo salar</i>	To maintain the Annex I habitats for which the SAC has been selected at favourable conservation status; oligotrophic to mesotrophic standing waters, <i>Molinia</i> meadows, old sessile oak woods. To maintain the Annex II species for which the cSAC has been selected at favourable conservation status; Atlantic Salmon.	Agricultural improvements/reclamation; drainage/changes in local hydrology including water abstraction; erosion (natural and anthropogenic); water quality/pollution; agricultural abandonment; overgrazing/undergrazing; direct loss of habitat to development; bracken & scrub encroachment; amenity/recreation use; tourism-related development. Introduction of alien invasive species Illegal Dumping Increased pollution/reduction in water quality Felling/Removal of Trees

Site code	Site name	Qualifying interests	Conservation objectives	Threats to site integrity
UK0016607	Pettigoe Plateau	3160 Natural dystrophic lakes and ponds 7130 Blanket bogs (* if active bogs) 3130 Oligotrophic to mesotrophic standing waters with vegetation of the <i>Littorelletea uniflorae</i> and/or of the <i>Isoëto-Nanojuncetea</i> 4010 Northern Atlantic wet heaths with <i>Erica tetralix</i> 4030 European dry heaths	To maintain the Annex I habitats for which the SAC has been selected at favourable conservation status; Natural dystrophic lakes and ponds, Blanket bogs, Oligotrophic to mesotrophic standing waters, Northern Atlantic wet heaths, European dry heaths	Water quality/pollution Changes in flow rates Arterial drainage/water abstraction/ lowering of the regional water table Siltation Loss of fringe vegetation Changes in seasonal water levels/fluctuations Direct loss of habitat to development Loading from effluents (WWTP) Recreation/Amenity Use Developments - marinas, fishing Introduction of alien invasive species Illegal Dumping Increased pollution/reduction in water quality
UK0016619	Monawilkin	6210 Semi-natural dry grasslands and scrubland facies: on calcareous substrates (<i>Festuco-Brometalia</i>) 91A0 Old sessile oak woods with <i>Ilex</i> and <i>Blechnum</i> in the British Isles	To maintain the Annex I habitats for which the SAC has been selected at favourable conservation status; Semi-natural dry grasslands and scrubland facies, Old sessile oak woods	Changes in local hydrology, peat extraction, overgrazing, forestry, burning, direct loss of habitat to development, arterial drainage/ water abstraction/ lowering of the regional water table, agricultural reclamation. Introduction of alien invasive species Illegal Dumping Felling/Removal of Trees

Site code	Site name	Qualifying interests	Conservation objectives	Threats to site integrity
UK0030116	Cladagh (Swanlinbar) River	3260 Water courses of plain to montane levels with the Ranunculion fluitantis and Callitricho-Batrachion vegetation 1029 Freshwater pearl mussel <i>Margaritifera margaritifera</i>	To maintain the Annex I habitats for which the SAC has been selected at favourable conservation status; Water courses of plain to montane levels; To maintain the Annex II species for which the cSAC has been selected at favourable conservation status; Freshwater pearl mussel	Water quality/pollution Changes in flow rates Arterial drainage/water abstraction/ lowering of the regional water table Siltation Loss of fringe vegetation Changes in seasonal water levels/fluctuations Direct loss of habitat to development Loading from effluents (WWTP) Recreation/Amenity Use Developments - marinas, fishing Introduction of alien invasive species Illegal Dumping
UK0016603	Cuilcagh Mountain	7130 Blanket bogs (* if active bogs) 3160 Natural dystrophic lakes and ponds 4010 Northern Atlantic wet heaths with <i>Erica tetralix</i> 4030 European dry heaths 4060 Alpine and Boreal heaths 8110 Siliceous scree of the montane to snow levels (Androsacetalia alpinae and Galeopsietalia ladani) 8220 Siliceous rocky slopes with chasmophytic vegetation	To maintain the Annex I habitat for which the SAC has been selected at favourable conservation status: Blanket bog, Natural dystrophic lakes and ponds, Northern Atlantic wet heaths, European dry heaths, Alpine and Boreal heaths, Siliceous scree of the montane to snow levels, Siliceous rocky slopes with chasmophytic vegetation	Changes in local hydrology including drainage Climate change (increased/reduced rainfall) Erosion, landslips Peat Extraction Overgrazing/undergrazing Forestry Burning Direct loss of habitat to development Arterial drainage/water abstraction/ lowering of the regional water table Agricultural reclamation/improvement Recreational/Amenity Use (walking, horse riding, cycling, quads and motorbikes) Introduction of alien invasive species Illegal Dumping Increased pollution/reduction in water quality

Site code	Site name	Qualifying interests	Conservation objectives	Threats to site integrity
UK0030068	Fardrum and Roosky Turloughs	3180 Turloughs	To maintain the Annex I habitats for which the SAC has been selected at favourable conservation status; turloughs	Agricultural improvements/reclamation; drainage/changes in local hydrology including water abstraction; erosion (natural and anthropogenic); water quality/pollution; agricultural abandonment; overgrazing/undergrazing; direct loss of habitat to development; bracken & scrub encroachment; amenity/recreation use; tourism-related development. Introduction of alien invasive species Illegal Dumping
UK0030045	Largalunny	91A0 Old sessile oak woods with <i>Ilex</i> and <i>Blechnum</i> in the British Isles	To maintain the Annex I habitats for which the SAC has been selected at favourable conservation status; Old sessile oak woods	Changes in local hydrology, peat extraction, overgrazing, forestry, burning, direct loss of habitat to development, arterial drainage/ water abstraction/ lowering of the regional water table, agricultural reclamation. Introduction of alien invasive species Illegal Dumping Felling/Removal of Trees
UK0030212	Moninea Bog	7110 Active raised bogs	To maintain the Annex I habitat for which the SAC has been selected at favourable conservation status: Active raised bog	Changes in local hydrology including drainage Climate change (increased/reduced rainfall) Erosion, landslips Peat Extraction Overgrazing/undergrazing Forestry; Burning Direct loss of habitat to development Arterial drainage/water abstraction/ lowering of the regional water table; Agricultural reclamation/improvement Recreational/Amenity Use (walking, horse riding, cycling, quads and motorbikes); Introduction of alien invasive species Illegal Dumping

Site code	Site name	Qualifying interests	Conservation objectives	Threats to site integrity
UK0016621	Magheraveely Marl Loughs	3140 Hard oligo-mesotrophic waters with benthic vegetation of <i>Chara</i> spp. 7230 Alkaline fens 7210 Calcareous fens with <i>Cladium mariscus</i> and species of the <i>Caricion davallianae</i> 1092 <i>Austropotamobius pallipes</i> Freshwater White-clawed Crayfish	To maintain the Annex I habitats for which the SAC has been selected at favourable conservation status; Oligo-mesotrophic waters with <i>Chara</i> spp., alkaline fens, calcareous fens with <i>Cladium mariscus</i> . To maintain the Annex II species for which the SAC has been selected at favourable conservation status; White-clawed Crayfish	Agricultural improvements/reclamation; drainage/changes in local hydrology including water abstraction; erosion (natural and anthropogenic); water quality/pollution; agricultural abandonment; overgrazing/undergrazing; direct loss of habitat to development; bracken & scrub encroachment; amenity/recreation use; tourism-related development; peat extraction; forestry; burning; arterial drainage/water abstraction/lowering of the regional water table; agricultural reclamation. Introduction of alien invasive species Illegal Dumping Increased pollution/reduction in water quality; Crayfish Fishing
UK0016614	Upper Lough Erne	3150 Natural eutrophic lakes with <i>Magnopotamion</i> or <i>Hydrocharition</i> -type vegetation 91A0 Old sessile oak woods with <i>Ilex</i> and <i>Blechnum</i> in the British Isles 91E0 Alluvial forests with <i>Alnus glutinosa</i> and <i>Fraxinus excelsior</i> (<i>Alno-Padion</i> , <i>Alnion incanae</i> , <i>Salicion albae</i>) 1355 Otter <i>Lutra lutra</i>	To maintain the Annex I habitats for which the SAC has been selected at favourable conservation status; Natural eutrophic lakes, Alluvial forests, Old sessile oak woods To maintain the Annex II species for which the SAC has been selected at favourable conservation status; Otter	Water quality/pollution Changes in flow rates Arterial drainage/water abstraction/ lowering of the regional water table Siltation Loss of fringe vegetation Changes in seasonal water levels/fluctuations Direct loss of habitat to development Loading from effluents (WWTP) Recreation/Amenity Use Developments - marinas, fishing Introduction of alien invasive species Illegal Dumping Increased pollution/reduction in water quality Felling/Removal of Trees

Site code	Site name	Qualifying interests	Conservation objectives	Threats to site integrity
UK0030300	West Fermanagh Scarplands	<p>6210 Semi-natural dry grasslands and scrubland facies: on calcareous substrates (Festuco-Brometalia)</p> <p>6410 <i>Molinia</i> meadows on calcareous, peaty or clayey-silt-laden soils (<i>Molinia caerulea</i>)</p> <p>8240 Limestone pavements</p> <p>9180 Tilio-Acerion forests of slopes, screes and ravines</p> <p>3150 Natural eutrophic lakes with Magnopotamion or Hydrocharition-type vegetation</p> <p>4010 Northern Atlantic wet heaths with <i>Erica tetralix</i></p> <p>7130 Blanket bogs (* if active bogs)</p> <p>7220 Petrifying springs with tufa formation (Cratoneurion)</p> <p>7230 Alkaline fens</p>	<p>To maintain the Annex I habitats for which the SAC has been selected at favourable conservation status; Semi-natural dry grasslands and scrubland facies, <i>Molinia</i> meadows, Limestone pavements, Tilio-Acerion forests of slopes, screes and ravines, Natural eutrophic lakes, Northern Atlantic wet heaths with <i>Erica tetralix</i>, blanket bog, petrifying springs with tufa, alkaline fens</p>	<p>Water quality/pollution</p> <p>Changes in flow rates</p> <p>Arterial drainage/water abstraction/ lowering of the regional water table</p> <p>Siltation</p> <p>Loss of fringe vegetation</p> <p>Changes in seasonal water levels/fluctuations</p> <p>Direct loss of habitat to development</p> <p>Loading from effluents (WWTP)</p> <p>Recreation/Amenity Use Developments - marinas, fishing</p> <p>Introduction of alien invasive species</p> <p>Illegal Dumping</p> <p>Increased pollution/reduction in water quality</p>

Site code	Site name	Qualifying interests	Conservation objectives	Threats to site integrity
UK0016622	Slieve Beagh	3160 Natural dystrophic lakes and ponds 7130 Blanket bogs 4030 European dry heaths	To maintain the Annex I habitats for which the SAC has been selected at favourable conservation status: blanket bogs, dystrophic lakes, European dry heaths	Changes in local hydrology, peat extraction, overgrazing, forestry, burning, direct loss of habitat to development, arterial drainage/ water abstraction/ lowering of the regional water table, agricultural reclamation. Introduction of alien invasive species Illegal Dumping Increased pollution/reduction in water quality Persecution (Poisoning)
UK0016620	Derryleckagh	7140 Transition mires and quaking bogs 91A0 Old sessile oak woods with <i>Ilex</i> and <i>Blechnum</i> in the British Isles	To maintain the Annex I habitats for which the SAC has been selected at favourable conservation status; transition mires, Old sessile oak woods	Water quality/pollution Changes in flow rates Arterial drainage/water abstraction/ lowering of the regional water table Loss of fringe vegetation Changes in seasonal water levels/fluctuations Direct loss of habitat to development Loading from effluents (WWTP) Recreation/Amenity Use Developments - marinas, fishing Introduction of alien invasive species Illegal Dumping Felling/Removal of Trees

Northern Ireland SPAs within 15km of County Donegal

Site code	Site name	Qualifying interests	Conservation objectives	Threats to site integrity
UK9020031	Lough Foyle	A674 <i>Branta bernicla hrota</i> Light-bellied Brent Goose A038 <i>Cygnus cygnus</i> Whooper Swan A157 <i>Limosa lapponica</i> Bar-tailed Godwit WATR Waterfowl Assemblage	To maintain the Annexed species for which the SPA has been selected at favourable conservation status: Whooper Swan, light-bellied Brent goose, bar-tailed godwit and other important species	Modification of cultivation practices; Airports, flightpaths; Marine water pollution; Invasive non-native species; Hunting and collection, and taking/removal, trapping, poisoning, poaching, predator control, accidental capture; Changes in biotic conditions; Utility and service lines; Marine and Freshwater Aquaculture; Other ecosystem modifications; Pollution to surface waters (limnic & terrestrial, marine & brackish); Outdoor sports and leisure activities, recreational activities.
UK9020051	Pettigoe Plateau	A140 <i>Pluvialis apricaria</i> Golden Plover	To maintain the Annexed species for which the SPA has been selected at favourable conservation status: Golden Plover	Grazing; Changes in biotic conditions; Changes in abiotic conditions; Human induced changes in hydraulic conditions; Outdoor sports and leisure activities, recreational activities; Fire and fire suppression.
UK9020071	Upper Lough Erne	A038 <i>Cygnus cygnus</i> Whooper Swan	To maintain the Annexed species for which the SPA has been selected at favourable conservation status: Whooper Swan	Outdoor sports and leisure activities, recreational activities; Pollution to surface waters (limnic & terrestrial, marine & brackish); Grazing; Modification of cultivation practices; Changes in abiotic conditions; Changes in biotic conditions; Utility and service lines.

Site code	Site name	Qualifying interests	Conservation objectives	Threats to site integrity
UK9020302	Slieve Beagh/ Mullaghfad/Lisnaskea	A082 <i>Circus cyaneus</i> Hen Harrier	To maintain the Annexed species for which the SPA has been selected at favourable conservation status: Hen Harrier	Changes in abiotic conditions; Changes in biotic conditions; Hunting and collection, and taking/removal; Trapping, poisoning, poaching, predator control, accidental capture; Grazing; Outdoor sports and leisure activities, recreational activities; Fire and fire suppression; Mining and quarrying; Renewable abiotic energy use; Forest and Plantation management & use; Other ecosystem modifications.

County Sligo SACs within 15km of County Donegal

Site code	Site name	Qualifying interests	Conservation objectives	Threats to site integrity
000622	Ballysadare Bay	1014 Narrow-mouthed whorl snail <i>Vertigo angustior</i> 1130 Estuaries 1140 Mudflats and sandflats not covered by seawater at low tide 1365 Harbour seal <i>Phoca vitulina</i> 2110 Embryonic shifting dunes 2120 Shifting dunes along the shoreline with <i>Ammophila arenaria</i> (white dunes) 2130 Fixed coastal dunes with herbaceous vegetation (grey dunes) 2190 Humid dune slacks	To maintain or restore the favourable conservation condition of the Qualifying Interests for which the SAC has been selected which are defined by the list of attributes and targets in the site-specific conservation objectives (NPWS (2013) Conservation Objectives: Ballysadare Bay SAC 000622. Version 1. National Parks and Wildlife Service, Department of Arts, Heritage and the Gaeltacht), and in relevant supporting documentation.	Decrease in water quality/Increased pollution Development of marinas and ports Disturbance to marine mammals; Dumping at sea Direct loss of habitat to development; Recreational/amenity use Agricultural improvements/Reclamation Drainage/Changes in local hydrology including water abstraction Erosion (natural and anthropogenic) Agricultural abandonment; Overgrazing/under grazing Bracken and scrub encroachment; Tourism related development Introduction of alien invasive species Illegal Dumping; Burning Quarrying/removal of sand Aquaculture
000623	Ben Bulbin, Gleniff and Glenade Complex	3260 Water courses of plain to montane levels with the <i>Ranunculus fluitans</i> and <i>Callitriche-Batrachion</i> vegetation 4010 Northern Atlantic wet heaths with <i>Erica tetralix</i> 4030 European dry heaths 4060 Alpine and Boreal heaths 5130 <i>Juniperus communis</i> formations on heaths or calcareous grasslands	To maintain or restore the favourable conservation condition of the Annex I habitat(s) and/or the Annex II species for which the SAC has been selected (NPWS (2016) Conservation objectives for Ben Bulbin, Gleniff and Glenade Complex SAC [000623]. Generic Version 5.0. Department of Arts, Heritage, Regional, Rural and Gaeltacht Affairs).	Changes in local hydrology including drainage Peat Extraction Overgrazing Forestry Burning Direct loss of habitat to development Arterial drainage/water abstraction/lowering of the regional water table Agricultural reclamation Introduction of alien invasive species Illegal Dumping Burning

Site code	Site name	Qualifying interests	Conservation objectives	Threats to site integrity
		<p>6210 Semi-natural dry grasslands and scrubland facies on calcareous substrates (<i>Festuco Brometalia</i>) (* important orchid sites)*</p> <p>6230 Species-rich <i>Nardus</i> grasslands, on siliceous substrates in mountain areas (and submountain areas, in Continental Europe)*</p> <p>6430 Hydrophilous tall herb fringe communities of plains and of the montane to alpine levels</p> <p>7140 Transition mires and quaking bogs</p> <p>7220 Petrifying springs with tufa formation (<i>Cratoneurion</i>)*</p> <p>7230 Alkaline fens</p> <p>8110 Siliceous scree of the montane to snow levels (<i>Androsacetalia alpinae</i> and <i>Galeopsietalia ladani</i>)</p> <p>8120 Calcareous and calcshist screes of the montane to alpine levels (<i>Thlaspietea rotundifolii</i>)</p> <p>8210 Calcareous rocky slopes with chasmophytic</p>		

Site code	Site name	Qualifying interests	Conservation objectives	Threats to site integrity
		vegetation 1013 Geyer's Whorl Snail <i>Vertigo geyeri</i> 1355 Otter <i>Lutra lutra</i>		
000625	Bunduff Lough and Machair/ Trawalua/ Mullaghmore	1140 Mudflats and sandflats not covered by seawater at low tide 1160 Large shallow inlets and bays 1170 Reefs 1395 Petalwort Petalophyllum ralfsii 2120 Shifting dunes along the shoreline with <i>Ammopila arenaria</i> (white dunes) 2130 Fixed coastal dunes with herbaceous vegetation (grey dunes) 21A0 Machairs (* in Ireland) 5130 <i>Juniperus communis</i> formations on heaths or calcareous grasslands 6210 Semi-natural dry grasslands and scrubland facies on calcareous substrates (Festuco-Brometalia) (* important orchid sites) 7230 Alkaline fens	To maintain or restore the favourable conservation condition of the Qualifying Interests for which the SAC has been selected which are defined by the list of attributes and targets in the site-specific conservation objectives (NPWS (2015) Conservation Objectives: Bunduff Lough and Machair / Trawalua / Mullaghmore SAC 000625. Version 1. National Parks and Wildlife Service, Department of Arts, Heritage and the Gaeltacht), and in relevant supporting documentation.	Decrease in water quality/Increased pollution Development of marinas and ports Disturbance to marine mammals Dumping at sea Direct loss of habitat to development Recreational/amenity use Agricultural improvements/Reclamation Drainage/Changes in local hydrology including water abstraction Erosion (natural and anthropogenic) Agricultural abandonment Overgrazing/undergrazing Bracken and scrub encroachment Tourism related development Introduction of alien invasive species Illegal Dumping Burning Quarrying/removal of sand Aquaculture
000627	Cummeen Strand/ Drumcliff Bay (Sligo Bay)	1014 Marsh Snail <i>Vertigo angustior</i> 1095 Sea Lamprey	To maintain or restore the favourable conservation condition of the Qualifying	Decrease in water quality/Increased pollution Development of marinas and ports Disturbance to marine mammals

Site code	Site name	Qualifying interests	Conservation objectives	Threats to site integrity
		<p><i>Petromyzon marinus</i> 1099 River Lamprey <i>Lampetra fluviatilis</i> 1130 Estuaries 1140 Mudflats and sandflats not covered by seawater at low tide 1365 Harbour seal <i>Phoca vitulina</i> 2110 Embryonic shifting dunes 2120 Shifting dunes along the shoreline with <i>Ammophila arenaria</i> (white dunes) 2130 Fixed coastal dunes with herbaceous vegetation (grey dunes) 5130 <i>Juniperus communis</i> formations on heaths or calcareous grasslands 7220 Petrifying springs with tufa formation (Cratoneurion)</p>	<p>Interests for which the SAC has been selected which are defined by the list of attributes and targets in the site-specific conservation objectives (NPWS (2013) Conservation Objectives: Cummeen Strand/Drumcliff Bay (Sligo Bay) SAC 000627. Version 1. National Parks and Wildlife Service, Department of Arts, Heritage and the Gaeltacht), and in relevant supporting documentation.</p>	<p>Dumping at sea Direct loss of habitat to development Recreational/amenity use Agricultural improvements/Reclamation Drainage/Changes in local hydrology including water abstraction Erosion (natural and anthropogenic) Agricultural abandonment Overgrazing/undergrazing Bracken and scrub encroachment Tourism related development Introduction of alien invasive species Illegal Dumping Burning Quarrying/removal of sand Aquaculture</p>
001976	Lough Gill	<p>3150 Natural eutrophic lakes with Magnopotamion or Hydrocharition - type vegetation 6210 Semi-natural dry grasslands and scrubland facies on calcareous substrates (<i>Festuco</i></p>	<p>To maintain or restore the favourable conservation condition of the Annex I habitat(s) and/or the Annex II species for which the SAC has been selected (NPWS (2016) Conservation objectives for Lough Gill SAC [001976].</p>	<p>Decrease in water quality/Increased pollution Changes in water flow rates Arterial drainage/water abstraction/lowering of the regional water table Siltation Loss of fringe vegetation Changes in seasonal water levels/fluctuations Direct loss of habitat to development</p>

Site code	Site name	Qualifying interests	Conservation objectives	Threats to site integrity
		<p>Brometalia) (* important orchid sites)*</p> <p>91A0 Old sessile oak woods with <i>Ilex</i> and <i>Blechnum</i> in the British Isles</p> <p>91E0 Alluvial forests with <i>Alnus glutinosa</i> and <i>Fraxinus excelsior</i> (Alno-Padion, Alnion incanae, Salicion albae)*</p> <p>1092 White-clawed Crayfish <i>Austropotamobius pallipes</i></p> <p>1095 Sea Lamprey <i>Petromyzon marinus</i></p> <p>1096 Brook Lamprey <i>Lampetra planeri</i></p> <p>1099 River Lamprey <i>Lampetra fluviatilis</i></p> <p>1106 Salmon <i>Salmo salar</i></p> <p>1355 Otter <i>Lutra lutra</i></p>	<p>Generic Version 5.0. Department of Arts, Heritage, Regional, Rural and Gaeltacht Affairs).</p>	<p>Loading from effluents (WWTP)</p> <p>Recreation/amenity use</p> <p>Developments – marinas</p> <p>Introduction of alien invasive species</p> <p>Illegal Dumping</p> <p>Crayfish Fishing</p>
001680	Streedagh Point Dunes	<p>1014 Narrow-mouthed Whorl Snail <i>Vertigo angustior</i></p> <p>1140 Mudflats and sandflats not covered by seawater at low tide</p> <p>1220 Perennial vegetation of stony banks</p> <p>1330 Atlantic salt meadows (<i>Glauco-Puccinellietalia maritima</i>)</p> <p>1410 Mediterranean salt</p>	<p>To maintain or restore the favourable conservation condition of the Qualifying Interests for which the SAC has been selected which are defined by the list of attributes and targets in the site-specific conservation objectives (NPWS (2015) Conservation Objectives: Streedagh Point Dunes SAC 001680. Version 1. National Parks and Wildlife Service,</p>	<p>Agricultural improvements/Reclamation</p> <p>Drainage/Changes in local hydrology including water abstraction</p> <p>Erosion (natural and anthropogenic)</p> <p>Agricultural abandonment</p> <p>Overgrazing/undergrazing</p> <p>Bracken and scrub encroachment</p> <p>Tourism related development</p> <p>Decrease in water quality/increased pollution</p> <p>Direct loss of habitat to development</p> <p>Tourism related development</p> <p>Introduction of alien invasive species</p>

Site code	Site name	Qualifying interests	Conservation objectives	Threats to site integrity
		meadows (<i>Juncetalia maritimi</i>) 2120 Shifting dunes along the shoreline with <i>Ammophila arenaria</i> (white dunes) 2130 Fixed coastal dunes with herbaceous vegetation (grey dunes)	Department of Arts, Heritage and the Gaeltacht), and in relevant supporting documentation.	Illegal Dumping Burning Quarrying/removal of sand Aquaculture
000638	Union Wood	91A0 Old sessile oak woods with <i>Ilex</i> and <i>Blechnum</i> in British Isles	To maintain or restore the favourable conservation condition of the Annex I habitat(s) and/or the Annex II species for which the SAC has been selected (NPWS (2016) Conservation objectives for Union Wood SAC [000638]. Generic Version 5.0. Department of Arts, Heritage, Regional, Rural and Gaeltacht Affairs).	Direct loss of habitat to development Amenity/recreational use Invasive species Lack of/inappropriate woodland management Overgrazing (deer) Introduction of alien invasive species Illegal Dumping Felling/Removal of Trees
001898	Unshin River	3260 Water courses of plain to montane levels with the <i>Ranunculus fluitans</i> and <i>Callitriche-Batrachion</i> vegetation 6210 Semi-natural dry grasslands and scrubland facies on calcareous substrates (<i>Festuco Brometalia</i>) (* important orchid sites)*	To maintain or restore the favourable conservation condition of the Annex I habitat(s) and/or the Annex II species for which the SAC has been selected (NPWS (2016) Conservation objectives for Unshin River SAC [001898]. Generic Version 5.0. Department of Arts, Heritage, Regional, Rural and Gaeltacht	Decrease in water quality/Increased pollution Changes in water flow rates Arterial drainage/water abstraction/lowering of the regional water table Siltation Loss of fringe vegetation Changes in seasonal water levels/fluctuations Direct loss of habitat to development Loading from effluents (WWTP) Recreation/amenity use Developments – marinas

Site code	Site name	Qualifying interests	Conservation objectives	Threats to site integrity
		6410 <i>Molinia</i> meadows on calcareous, peaty or clayey-silt-laden soils (Molinion caeruleae) 91E0 Alluvial forests with <i>Alnus glutinosa</i> and <i>Fraxinus excelsior</i> (Alno-Padion, Alnion incanae, Salicion albae)* 1106 Salmon <i>Salmo salar</i> 1355 Otter <i>Lutra lutra</i>	Affairs).	Introduction of alien invasive species Illegal Dumping

County Sligo SPAs within 15km of County Donegal

Site code	Site name	Qualifying interests	Conservation objectives	Threats to site integrity
004013	Drumcliff Bay	A144 Sanderling <i>Calidris alba</i> A157 Bar-tailed Godwit <i>Limosa lapponica</i> A999 Wetland and Waterbirds	To maintain or restore the favourable conservation condition of the bird species listed as Special Conservation Interests for this SPA which are defined by the list of attributes and targets in the site-specific conservation objectives (NPWS (2013) Conservation Objectives: Drumcliff Bay SPA 004013. Version 1. National Parks and Wildlife Service, Department of Arts, Heritage and the Gaeltacht), and in relevant supporting documentation.	Direct and indirect impacts to the habitats of the bird species of conservation interests (loss of habitat) Direct loss of habitat to development Water quality/pollution Disturbance including recreation/amenity use Introduction of alien invasive species Illegal Dumping Disturbance from Recreational/amenity use Inappropriate land management
004035	Cummeen Strand	A046 Brent Goose <i>Branta bernicla hrota</i> A130 Oystercatcher <i>Haematopus ostralegus</i> A162 Redshank <i>Tringa totanus</i> A999 Wetland and Waterbirds	To maintain or restore the favourable conservation condition of the bird species listed as Special Conservation Interests for this SPA which are defined by the list of attributes and targets in the site-specific conservation objectives (NPWS (2013) Conservation Objectives: Cummeen Strand SPA 004035. Version 1. National Parks and Wildlife Service, Department of Arts, Heritage and the Gaeltacht), and in relevant	Direct and indirect impacts to the habitats of the bird species of conservation interests (loss of habitat) Direct loss of habitat to development Water quality/pollution Disturbance including recreation/amenity use Introduction of alien invasive species Illegal Dumping Persecution (Poisoning) Disturbance from Recreational/amenity use Inappropriate land management

Site code	Site name	Qualifying interests	Conservation objectives	Threats to site integrity
			supporting documentation.	
004068	Inishmurray	A018 Shag <i>Phalacrocorax aristotelis</i> A045 Barnacle Goose <i>Branta leucopsis</i> A184 Herring Gull <i>Larus argentatus</i> A194 Arctic Tern <i>Sterna paradisaea</i>	To maintain or restore the favourable conservation condition of the bird species listed as Special Conservation Interests for this SPA (NPWS (2016) Conservation objectives for Inishmurray SPA [004068]. Generic Version 5.0. Department of Arts, Heritage, Regional, Rural and Gaeltacht Affairs).	Direct and indirect impacts to the habitats of the bird species of conservation interests (loss of habitat) Direct loss of habitat to development Water quality/pollution Disturbance including recreation/amenity use Introduction of alien invasive species Illegal Dumping Disturbance from Recreational/amenity use Inappropriate land management
004129	Ballysadare Bay	A046 Light-bellied Brent Goose <i>Branta bernicla hrota</i> A141 Grey Plover <i>Pluvialis squatarola</i> A149 Dunlin <i>Calidris alpina alpina</i> A157 Bar-tailed Godwit <i>Limosa lapponica</i> A162 Redshank <i>Tringa totanus</i> A999 Wetland and Waterbirds	To maintain or restore the favourable conservation condition of the bird species listed as Special Conservation Interests for this SPA which are defined by the list of attributes and targets in the site-specific conservation objectives (NPWS (2013) Conservation Objectives: Ballysadare Bay SPA 004129. Version 1. National Parks and Wildlife Service, Department of Arts, Heritage and the Gaeltacht), and in relevant supporting documentation.	Direct and indirect impacts to the habitats of the bird species of conservation interests (loss of habitat) Direct loss of habitat to development Water quality/pollution Disturbance including recreation/amenity use Introduction of alien invasive species Illegal Dumping Disturbance from Recreational/amenity use Inappropriate land management
004135	Ardboline Island and Horse Island	A017 Cormorant <i>Phalacrocorax carbo</i> A045 Barnacle Goose <i>Branta leucopsis</i>	To maintain or restore the favourable conservation condition of the bird species listed as Special Conservation	Direct and indirect impacts to the habitats of the bird species of conservation interests (loss of habitat) Direct loss of habitat to development

Site code	Site name	Qualifying interests	Conservation objectives	Threats to site integrity
			Interests for this SPA (NPWS (2016) Conservation objectives for Ardboline Island and Horse Island SPA [004135]. Generic Version 5.0. Department of Arts, Heritage, Regional, Rural and Gaeltacht Affairs).	Water quality/pollution Disturbance including recreation/amenity use Introduction of alien invasive species Illegal Dumping Disturbance from Recreational/amenity use Inappropriate land management
004187	Sligo/Leitrim Uplands	A103 Peregrine <i>Falco peregrinus</i> A346 Chough <i>Pyrrhocorax pyrrhocorax</i>	To maintain or restore the favourable conservation condition of the bird species listed as Special Conservation Interests for this SPA (NPWS (2016) Conservation objectives for Sligo/Leitrim Uplands SPA [004187]. Generic Version 5.0. Department of Arts, Heritage, Regional, Rural and Gaeltacht Affairs).	Direct loss of habitat to development Water quality/pollution Disturbance including recreation/amenity use Introduction of alien invasive species Illegal Dumping Disturbance from Recreational/amenity use Inappropriate land management
004234	Ballintemple and Ballygilgan	A045 Barnacle Goose <i>Branta leucopsis</i>	To maintain or restore the favourable conservation condition of the bird species listed as Special Conservation Interests for this SPA (NPWS (2016) Conservation objectives for Ballintemple and Ballygilgan SPA [004234]. Generic Version 5.0. Department of Arts, Heritage, Regional, Rural and Gaeltacht Affairs).	Urbanised areas, human habitation Airport

County Leitrim SACs within 15km of County Donegal

Site code	Site name	Qualifying interests	Conservation objectives	Threats to site integrity
000623	Ben Bulbin, Gleniff and Glenade Complex	<p>3260 Water courses of plain to montane levels with the Ranunculion fluitantis and Callitriche-Batrachion vegetation</p> <p>4010 Northern Atlantic wet heaths with <i>Erica tetralix</i></p> <p>4030 European dry heaths</p> <p>4060 Alpine and Boreal heaths</p> <p>5130 <i>Juniperus communis</i> formations on heaths or calcareous grasslands</p> <p>6210 Semi-natural dry grasslands and scrubland facies on calcareous substrates (Festuco Brometalia) (* important orchid sites)*</p> <p>6230 Species-rich <i>Nardus</i> grasslands, on siliceous substrates in mountain areas (and submountain areas, in Continental Europe)*</p> <p>6430 Hydrophilous tall herb fringe communities of plains and of the montane to alpine levels</p> <p>7140 Transition mires and quaking bogs</p>	<p>To maintain or restore the favourable conservation condition of the Annex I habitat(s) and/or the Annex II species for which the SAC has been selected (NPWS (2016) Conservation objectives for Ben Bulbin, Gleniff and Glenade Complex SAC [000623]. Generic Version 5.0. Department of Arts, Heritage, Regional, Rural and Gaeltacht Affairs).</p>	<p>Forestry, burning, direct loss of habitat to development, arterial drainage/ water abstraction/ lowering of the regional water table, agricultural reclamation</p> <p>Introduction of alien invasive species</p> <p>Illegal Dumping</p>

Site code	Site name	Qualifying interests	Conservation objectives	Threats to site integrity
		<p>7220 Petrifying springs with tufa formation (Cratoneurion)*</p> <p>7230 Alkaline fens</p> <p>8110 Siliceous scree of the montane to snow levels (Androsacetalia alpinae and Galeopsietalia ladani)</p> <p>8120 Calcareous and calcshist screes of the montane to alpine levels (Thlaspietea rotundifolii)</p> <p>8210 Calcareous rocky slopes with chasmophytic vegetation</p> <p>1013 Geyer's Whorl Snail <i>Vertigo geyeri</i></p> <p>1355 Otter <i>Lutra lutra</i></p>		
000625	Bunduff Lough and Machair/ Trawalua/ Mullaghmore	<p>1140 Mudflats and sandflats not covered by seawater at low tide</p> <p>1160 Large shallow inlets and bays</p> <p>1170 Reefs</p> <p>1395 Petalwort <i>Petalophyllum ralfsii</i></p> <p>2120 Shifting dunes along the shoreline with <i>Ammopila arenaria</i> (white dunes)</p> <p>2130 Fixed coastal dunes with herbaceous vegetation</p>	<p>To maintain or restore the favourable conservation condition of the Qualifying Interests for which the SAC has been selected which are defined by the list of attributes and targets in the site-specific conservation objectives (NPWS (2015) Conservation Objectives: Bunduff Lough and Machair / Trawalua / Mullaghmore SAC 000625. Version 1. National Parks and Wildlife Service, Department of</p>	<p>Water quality/ pollution (including groundwater), agricultural improvements/ reclamation, drainage/changes in local hydrology including water abstraction, water quality/pollution, agricultural abandonment, over grazing/ undergrazing, direct loss of habitat to development, bracken & scrub encroachment, amenity/ recreational use, tourism related development.</p> <p>Introduction of alien invasive species</p> <p>Illegal Dumping</p> <p>Burning</p> <p>Quarrying/removal of sand</p> <p>Aquaculture</p>

Site code	Site name	Qualifying interests	Conservation objectives	Threats to site integrity
		(grey dunes) 21A0 Machairs (* in Ireland) 5130 <i>Juniperus communis</i> formations on heaths or calcareous grasslands 6210 Semi-natural dry grasslands and scrubland facies on calcareous substrates (Festuco-Brometalia) (* important orchid sites) 7230 Alkaline fens	Arts, Heritage and the Gaeltacht), and in relevant supporting documentation.	
001919	Glenade Lough	3150 Natural eutrophic lakes with Magnopotamion or Hydrocharition - type vegetation 1092 White-clawed Crayfish <i>Austropotamobius pallipes</i> 1833 Slender Naiad <i>Najas flexilis</i>	To maintain or restore the favourable conservation condition of the Annex I habitat(s) and/or the Annex II species for which the SAC has been selected (NPWS (2016) Conservation objectives for Glenade Lough SAC [001919]. Generic Version 5.0. Department of Arts, Heritage, Regional, Rural and Gaeltacht Affairs).	Water quality/ pollution, changes in flow rates, arterial drainage/ water abstraction/ lowering of the regional water table, direct loss of habitat to development, loading from effluents (WWTP), recreation/ amenity use, developments- marinas. Introduction of alien invasive species Illegal Dumping
001403	Arroo Mountain	4010 Northern Atlantic wet heaths with <i>Erica tetralix</i> 4030 European dry heaths 4060 Alpine and Boreal heaths 7130 Blanket bogs (* if active bog)	To maintain or restore the favourable conservation condition of the Qualifying Interests for which the SAC has been selected which are defined by the list of attributes and targets in the site-specific	Changes in local hydrology including drainage, peat extraction, overgrazing, forestry, burning, direct loss of habitat to development, arterial drainage/ water abstraction/ lowering of the regional water table, agricultural reclamation. Introduction of alien invasive species Illegal Dumping

Site code	Site name	Qualifying interests	Conservation objectives	Threats to site integrity
		7220 Petrifying springs with tufa formation (Cratoneurion) 8120 Calcareous and calcshist screes of the montane to alpine levels (Thlaspietea rotundifolii) 8210 Calcareous rocky slopes with chasmophytic vegetation	conservation objectives (NPWS (2016) Conservation Objectives: Arroo Mountain SAC 001403. Version 1. National Parks and Wildlife Service, Department of Arts, Heritage, Regional, Rural and Gaeltacht Affairs), and in relevant supporting documentation.	
000428	Lough Melvin	3130 Oligotrophic to mesotrophic standing waters with vegetation of the Littorelletea uniflorae and/or Isoeto-Nanojuncetea 6410 <i>Molinia</i> meadows on calcareous, peaty or clayey-silt-laden soils (Molinion caeruleae) 1106 Salmon <i>Salmo salar</i> 1355 Otter <i>Lutra lutra</i>	To maintain or restore the favourable conservation condition of the Annex I habitat(s) and/or the Annex II species for which the SAC has been selected (NPWS (2016) Conservation objectives for Lough Melvin SAC [000428]. Generic Version 5.0. Department of Arts, Heritage, Regional, Rural and Gaeltacht Affairs).	Water quality/ pollution, changes in flow rates, arterial drainage/ water abstraction/ lowering of the regional water table, loss of fringe vegetation, changes in seasonal water levels/ fluctuations, direct loss of habitat to development, loading from effluents (WWTP), recreation/ amenity use. Introduction of alien invasive species Illegal Dumping Increased pollution/reduction in water quality
001976	Lough Gill	3150 Natural eutrophic lakes with Magnopotamion or Hydrocharition - type vegetation 6210 Semi-natural dry grasslands and scrubland facies on calcareous substrates (Festuco Brometalia) (* important orchid sites)*	To maintain or restore the favourable conservation condition of the Annex I habitat(s) and/or the Annex II species for which the SAC has been selected (NPWS (2016) Conservation objectives for Lough Gill SAC [001976]. Generic Version 5.0. Department of Arts, Heritage,	Water quality/ pollution, changes in flow rates, arterial drainage/ water abstraction/ lowering of the regional water table, siltation, loss of fringe vegetation, changes in seasonal water levels/ fluctuations, direct loss of habitat to development, loading of effluents (WWTP), recreation/ amenity use, direct loss to developments, lack of inappropriate woodland management, overgrazing. Introduction of alien invasive species Illegal Dumping

Site code	Site name	Qualifying interests	Conservation objectives	Threats to site integrity
		91A0 Old sessile oak woods with <i>Ilex</i> and <i>Blechnum</i> in the British Isles 91E0 Alluvial forests with <i>Alnus glutinosa</i> and <i>Fraxinus excelsior</i> (Alno-Padion, Alnion incanae, Salicion albae)* 1092 White-clawed Crayfish <i>Austropotamobius pallipes</i> 1095 Sea Lamprey <i>Petromyzon marinus</i> 1096 Brook Lamprey <i>Lampetra planeri</i> 1099 River Lamprey <i>Lampetra fluviatilis</i> 1106 Salmon <i>Salmo salar</i> 1355 Otter <i>Lutra lutra</i>	Regional, Rural and Gaeltacht Affairs).	Increased pollution/reduction in water quality Felling/Removal of Trees
002032	Boleybrack Mountain	3160 Natural dystrophic lakes and ponds 4010 Northern Atlantic wet heaths with <i>Erica tetralix</i> 4030 European dry heaths 6410 <i>Molinia</i> meadows on calcareous, peaty or clayey-silt-laden soils (Molinion caeruleae) 7130 Blanket bogs (* if active bog) A140 Golden Plover <i>Pluvialis apricaria</i>	To maintain or restore the favourable conservation condition of the Qualifying Interests for which the SAC has been selected which are defined by the list of attributes and targets in the site-specific conservation objectives (NPWS (2016) Conservation Objectives: Boleybrack Mountain SAC 002032. Version 1. National Parks and Wildlife Service, Department of Arts, Heritage, Regional, Rural and	Parasitism (fauna) Burning down Mechanical removal of peat Sylviculture, forestry Forest and Plantation management & use Forest planting on open ground Roads, paths and railroads Abandonment of pastoral systems, lack of grazing Non intensive cattle grazing Restructuring agricultural land holding Pipe lines Problematic native species Intensive sheep grazing Sand and gravel quarries

Site code	Site name	Qualifying interests	Conservation objectives	Threats to site integrity
			Gaeltacht Affairs), and in relevant supporting documentation.	Taking from nest (e.g. falcons) Surface water abstractions for public water supply Use of biocides, hormones and chemicals Walking, horse riding and non-motorised vehicles Wind energy production

County Leitrim SPAs within 15km of County Donegal

Site code	Site name	Qualifying interests	Conservation objectives	Threats to site integrity
004187	Sligo/ Leitrim Uplands	A103 Peregrine <i>Falco peregrinus</i> A346 Chough Pyrrhocorax pyrrhocorax	To maintain or restore the favourable conservation condition of the bird species listed as Special Conservation Interests for this SPA (NPWS (2016) Conservation objectives for Sligo/Leitrim Uplands SPA [004187]. Generic Version 5.0. Department of Arts, Heritage, Regional, Rural and Gaeltacht Affairs).	Direct and indirect impacts to the habitats of the bird species of conservation interests (loss of habitat), direct loss of habitat to development, water quality/ pollution, disturbance including recreation/ amenity use. Introduction of alien invasive species Illegal Dumping Disturbance from Recreational/amenity use Inappropriate land management

EC Environmental Objectives (FPM) Regulations 2009 sites within the Donegal Area

Site code	Site name	Freshwater Pearl Mussel Population name	Conservation objectives	Threats to site integrity
000140	Fawnboy Bog / Lough Nacung SAC	Clady	Maintain Clady population at a favourable conservation status, as prescribed by third schedule of the regulations. Achieve the Ecological Quality Objectives for the freshwater mussel habitat as prescribed by fourth schedule of the regulations.	Siltation Peat extraction Afforestation Direct loss of habitat Discharges to water bodies in catchment Introduction of alien invasive species Illegal Dumping Water Pollution Pearl Fishing (illegal)
000163	Lough Eske and Ardnamona Wood	Eske	Maintain Eske population at a favourable conservation status, as prescribed by third schedule of the regulations. Achieve the Ecological Quality Objectives for the freshwater mussel habitat as prescribed by fourth schedule of the regulations.	Siltation Peat extraction Afforestation Direct loss of habitat Discharges to water bodies in catchment Introduction of alien invasive species Illegal Dumping Water Pollution Pearl Fishing (illegal)
002047	Cloghernagore Bog and Glenveagh National Park	Glaskeelan	Maintain Glaskeelan population at a favourable conservation status, as prescribed by third schedule of the regulations. Achieve the Ecological Quality Objectives for the freshwater mussel habitat as prescribed by fourth schedule of the regulations.	Siltation Peat extraction Afforestation Direct loss of habitat Discharges to water bodies in catchment Introduction of alien invasive species Illegal Dumping Water Pollution Pearl Fishing (illegal)

Site code	Site name	Freshwater Pearl Mussel Population name	Conservation objectives	Threats to site integrity
002176	Leannan River	Leannan	Maintain Leannan population at a favourable conservation status, as prescribed by third schedule of the regulations. Achieve the Ecological Quality Objectives for the freshwater mussel habitat as prescribed by fourth schedule of the regulations.	Siltation Peat extraction Afforestation Direct loss of habitat Discharges to water bodies in catchment Introduction of alien invasive species Illegal Dumping Water Pollution Pearl Fishing (illegal)
002047	Cloghernagor Bog and Glenveagh National Park	Owencarrow	Maintain Owencarrow population at a favourable conservation status, as prescribed by third schedule of the regulations. Achieve the Ecological Quality Objectives for the freshwater mussel habitat as prescribed by fourth schedule of the regulations.	Siltation Peat extraction Afforestation Direct loss of habitat Discharges to water bodies in catchment Introduction of alien invasive species Illegal Dumping Water Pollution Pearl Fishing (illegal)
000197	West of Ardara / Maas Road	Owenea	Maintain Owenea population at a favourable conservation status, as prescribed by third schedule of the regulations. Achieve the Ecological Quality Objectives for the freshwater mussel habitat as prescribed by fourth schedule of the regulations.	Siltation Peat extraction Afforestation Direct loss of habitat Discharges to water bodies in catchment Introduction of alien invasive species Illegal Dumping Water Pollution Pearl Fishing (illegal)

9. Appendix 2. Impact Assessment Screening Matrix - Natura Impact Report

Section 6.5 Sub-par.	Natura 2000 That May Be Affected (Name/Code)	Potential Impact of Policy/Objective	Risk of Significance Impact (Y/N)	Potential of Combination Impacts	Risk of Significant Combination Impacts'	Mitigation
6.5 Wind turbines must meet the requirements and standards set out in the DEHLG Wind Energy Development Guidelines 2006, or any subsequent related Guidelines						
6.5	Potentially all sites in the vicinity of windfarms	Largely positive – implementation of guidelines reduces the environmental and landscape impact of windfarms with incidental benefits for any European sites in the vicinity and their conservation objectives	Positive	Positive	Positive. Guidelines deal with reducing cumulative impacts of windfarms	Mitigation: None
Specific Action Required: Avoidance/Mitigation/Policy Deletion OR Amendment						
None - Impact on the Natura 2000 Network is unlikely and sufficient additional protection is provided in the Draft CDP through mitigating policies and objectives including NH-O-1 to NH-O-11, NH-P-1 to NH-P-5, NH-P-10 and NH-P-18, WES-O-4, WES-O-5, WES-O-6, WES-O-7, WES-P-4, WES-P-5, and WES-P-8						
6.5 Wind turbines must meet the requirements and standards set out in the DEHLG Wind Energy Development Guidelines 2006, or any subsequent related Guidelines and in addition must not be located within:						
(a) The zone of visual influence (ZVI) of the Glenveagh National Park						
6.5 (a)	Sites within the zone of visual influence of Glenveagh National Park	Positive by preventing development in relevant European sites	Positive	Positive	Positive	Mitigation: None

Section 6.5 Sub-par.	Natura 2000 That May Be Affected (Name/Code)	Potential Impact of Policy/Objective	Risk of Significance Impact (Y/N)	Potential of Combination Impacts	Risk of Significant Combination Impacts'	Mitigation
Specific Action Required: Avoidance/Mitigation/Policy Deletion OR Amendment						
None - Impact on the Natura 2000 Network is unlikely and sufficient additional protection is provided in the Draft CDP through mitigating policies and objectives including NH-O-1 to NH-O-11, NH-P-1 to NH-P-5, NH-P-10 and NH-P-18, WES-O-4, WES-O-5, WES-O-6, WES-O-7, WES-P-4, WES-P-5, and WES-P-8						
6.5 Wind turbines must meet the requirements and standards set out in the DEHLG Wind Energy Development Guidelines 2006, or any subsequent related Guidelines and in addition must not be located within:						
(b) The zone of influence/flight path at Donegal Airport.						
6.5 (b)	Potentially all sites in the zone of influence/flight path at Donegal Airport	Positive by preventing development in relevant European sites	Positive	Positive	Positive	Mitigation: None
Specific Action Required: Avoidance/Mitigation/Policy Deletion OR Amendment						
None - Impact on the Natura 2000 Network is unlikely and sufficient additional protection is provided in the Draft CDP through mitigating policies and objectives including NH-O-1 to NH-O-11, NH-P-1 to NH-P-5, NH-P-10 and NH-P-18, WES-O-4, WES-O-5, WES-O-6, WES-O-7, WES-P-4, WES-P-5, and WES-P-8						
6.5 Wind turbines must meet the requirements and standards set out in the DEHLG Wind Energy Development Guidelines 2006, or any subsequent related Guidelines and in addition must not be located within:						
(c) Areas identified as locations where wind farm development would not be acceptable as identified on map 8.2.1, chapter 8 of the County Development Plan 2018-2024.						
6.5 (c)	Potentially all sites	Positive by preventing development in relevant European sites and in adjacent areas	Positive	Positive	Positive in reducing cumulative pressures from development	Mitigation: None
Specific Action Required: Avoidance/Mitigation/Policy Deletion OR Amendment						
None - Impact on the Natura 2000 Network is unlikely and sufficient additional protection is provided in the Draft CDP through mitigating policies and objectives including NH-O-1 to NH-O-11, NH-P-1 to NH-P-5, NH-P-10 and NH-P-18, WES-O-4, WES-O-5, WES-O-6, WES-O-7, WES-P-4, WES-P-5, and WES-P-8						

Section 6.5 Sub-par.	Natura 2000 That May Be Affected (Name/Code)	Potential Impact of Policy/Objective	Risk of Significance Impact (Y/N)	Potential of Combination Impacts	Risk of Significant Combination Impacts'	Mitigation
6.5 Wind turbines must meet the requirements and standards set out in the DEHLG Wind Energy Development Guidelines 2006, or any subsequent related Guidelines and in addition must not be located within:						
(d) Special Areas of Conservation (SACs) nor Special Protection Areas (SPAs).						
6.5 (d)	All sites	Positive by preventing development in European sites	Positive	Positive	Positive	Mitigation: None
Specific Action Required: Avoidance/Mitigation/Policy Deletion OR Amendment						
None - Impact on the Natura 2000 Network is unlikely and sufficient additional protection is provided in the Draft CDP through mitigating policies and objectives including NH-O-1 to NH-O-11, NH-P-1 to NH-P-5, NH-P-10 and NH-P-18, WES-O-4, WES-O-5, WES-O-6, WES-O-7, WES-P-4, WES-P-5, and WES-P-8						
6.5 Wind turbines must meet the requirements and standards set out in the DEHLG Wind Energy Development Guidelines 2006, or any subsequent related Guidelines and in addition must not be located within:						
(e) The 6 Fresh Water Pearl Mussel (S.I. 296 of 2009) catchments contained in the Freshwater Pearl Mussel Sub-Basin Management Plans for Clady, Eske, Glaskeelin, Leannan, Owencarrow and Owenea.						
6.5 (e)	Potentially all sites within, in the vicinity of and particularly downstream of feshwater pearl mussel catchments	Positive by preventing development in relevant European sites and reducing hydrological pressures on water dependent and freshwater habitats	Positive	Positive	Positive	Mitigation: None
Specific Action Required: Avoidance/Mitigation/Policy Deletion OR Amendment						
None - Impact on the Natura 2000 Network is unlikely and sufficient additional protection is provided in the Draft CDP through mitigating policies and objectives including NH-O-1 to NH-O-11, NH-P-1 to NH-P-5, NH-P-10 and NH-P-18, WES-O-4, WES-O-5, WES-O-6, WES-O-7, WES-P-4, WES-P-5, and WES-P-8						

Section 6.5 Sub- par.	Natura 2000 That May Be Affected (Name/Code)	Potential Impact of Policy/ Objective	Risk of Significance Impact (Y/N)	Potential of Combination Impacts	Risk of Significant Combination Impacts'	Mitigation
<p>6.5 Wind turbines must meet the requirements and standards set out in the DEHLG Wind Energy Development Guidelines 2006, or any subsequent related Guidelines and in addition must not be located within:</p> <p>(f) A set back distance of ten times the tip height of proposed turbines from residential properties and other centres of human habitation.</p>						
6.5 (f)	Potentially all sites	Potentially positive by preventing development in the vicinity of European sites	Positive	Positive	Positive in reducing any cumulative pressures from wind farm development and residential properties and other centres of human habitation	Mitigation: None
<p>Specific Action Required: Avoidance/Mitigation/Policy Deletion OR Amendment</p> <p>None - Impact on the Natura 2000 Network is unlikely and sufficient additional protection is provided in the Draft CDP through mitigating policies and objectives including NH-O-1 to NH-O-11, NH-P-1 to NH-P-5, NH-P-10 and NH-P-18, WES-O-4, WES-O-5, WES-O-6, WES-O-7, WES-P-4, WES-P-5, and WES-P-8</p>						

